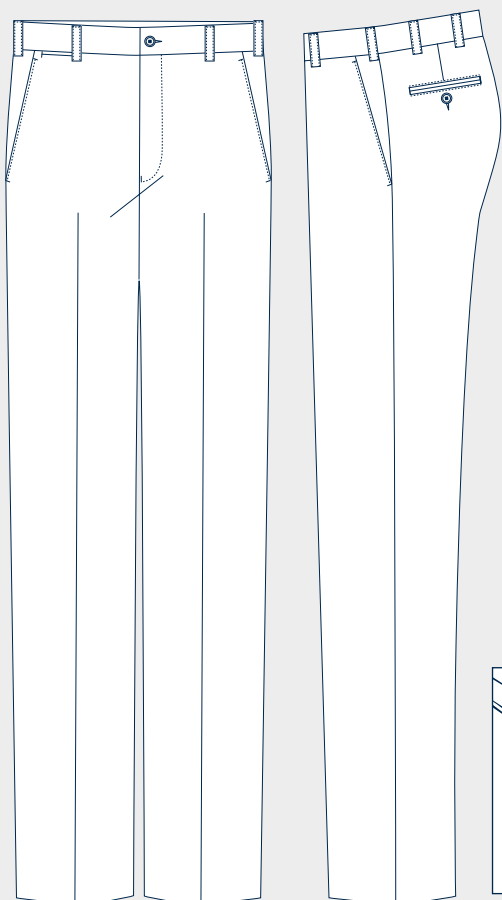




**STOCK SERVICE CATALOGUE**



# TRFFB 064



black  
BBLK



## STYLE

TRFFB - Flat front trouser

## FABRIC

064

## COMPOSITION

100% Polyester

## GARMENT FEATURES



Travel friendly



High performance  
all day wearing



Machine  
washable



Minimum Iron



Mechanical  
stretch

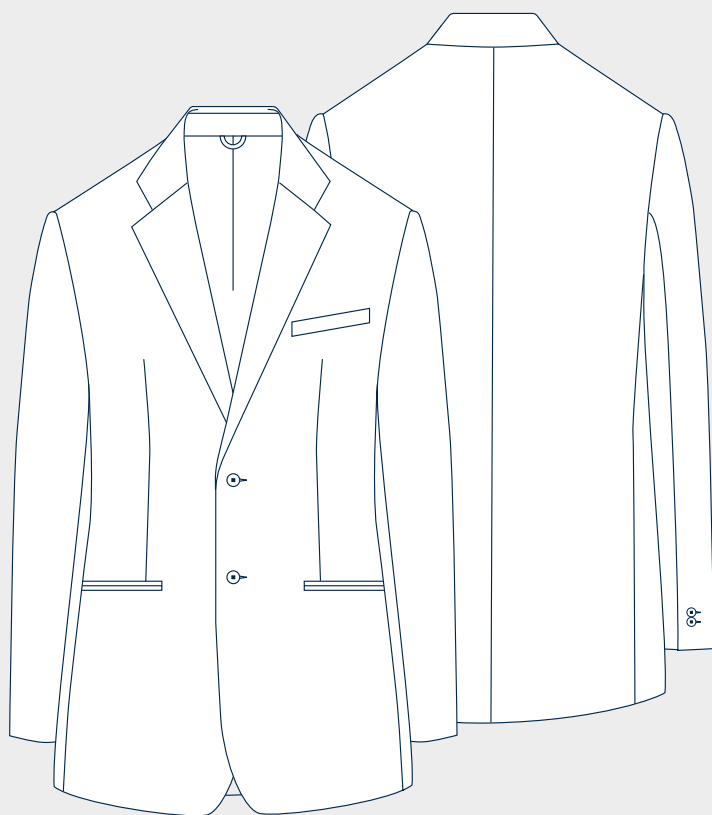
## SIZE RANGE

77R - 102R

87S - 112S

# MEXICO2 854

---



black  
BBLK

## STYLE

MEXICO - 2 button blazer

## FABRIC

854

## COMPOSITION

100% Polyester

## GARMENT FEATURES



Mechanical  
stretch



High performance  
all day wearing



Machine  
washable



Easy wearing



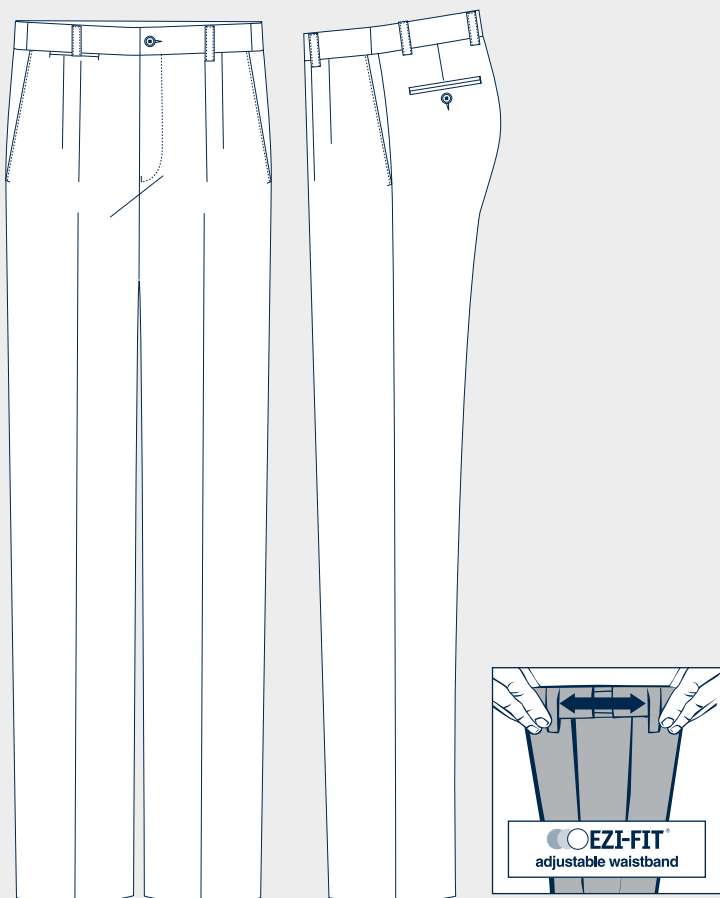
Travel friendly

## SIZE RANGE

36R - 48R

36S - 50S

# ZULU05 854



## STYLE

ZULU - Ezi fit twin pleat trouser

## FABRIC

854

## COMPOSITION

100% Polyester

## GARMENT FEATURES



Mechanical stretch



High performance all day wearing



Machine washable



Easy wearing



Travel friendly

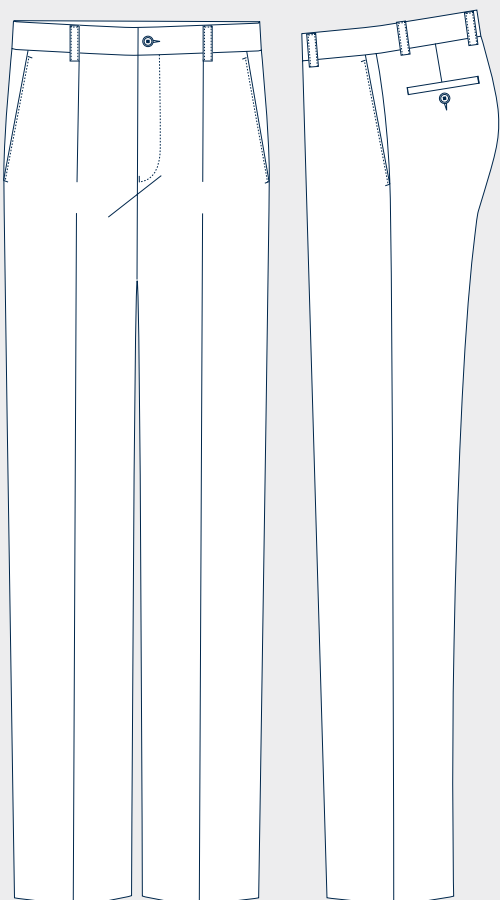
## SIZE RANGE

77R - 102R

87S - 117S

# TR1PLB 734

---



black  
RBLK

## STYLE

TR1PLB - 1 pleat trouser

## FABRIC

734

## COMPOSITION

65% Polyester, 35% Viscose

## GARMENT FEATURES



Gaberdine  
weave



Travel friendly



Machine  
washable



Easy wearing



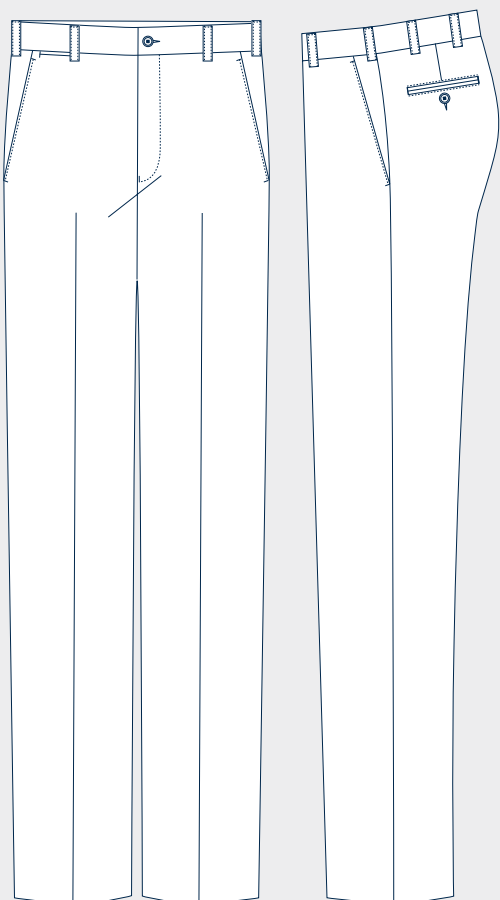
Superior drape

## SIZE RANGE

77R - 102R

87S - 107S

# TRFFB 835



black  
VBLK

charcoal  
VCCG

## STYLE

TRFFB - Flat front trouser

## FABRIC

835

## COMPOSITION

65% Polyester, 35% Viscose

## GARMENT FEATURES



Travel friendly



High performance  
all day wearing



Machine  
washable



Easy quick  
drying

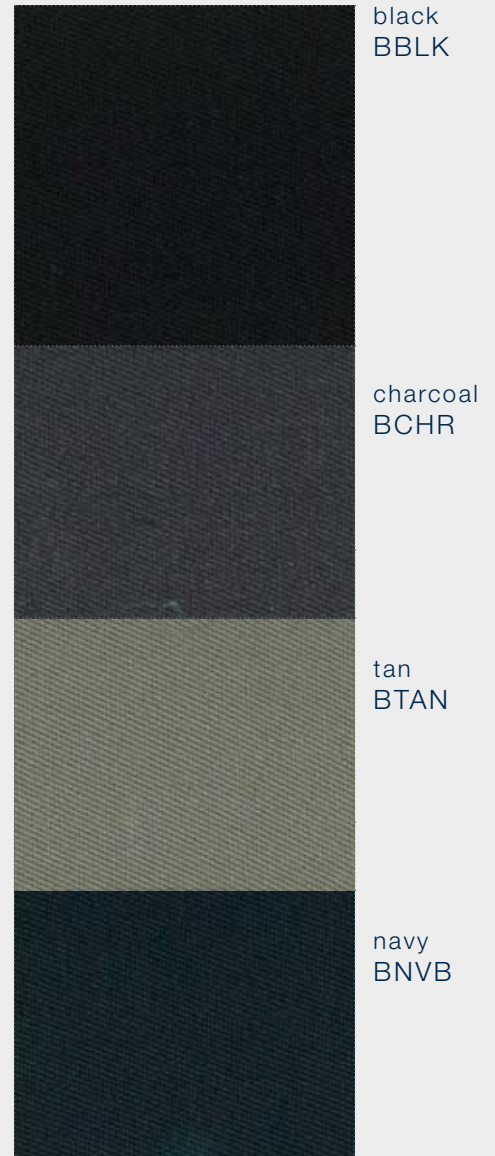
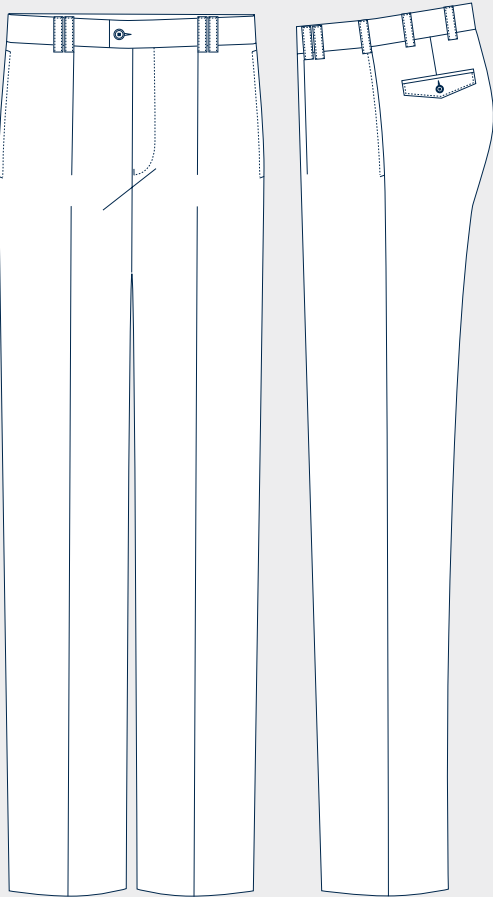
## SIZE RANGE

77R - 102R

87S - 112S

# MOLG04 421

(style previously called molong)



## STYLE

MOLONG - 1 pleat trouser

## FABRIC

421

## COMPOSITION

65% Polyester, 35% Viscose

## GARMENT FEATURES



Gaberdine  
weave



Travel friendly



Machine  
washable



Easy wearing



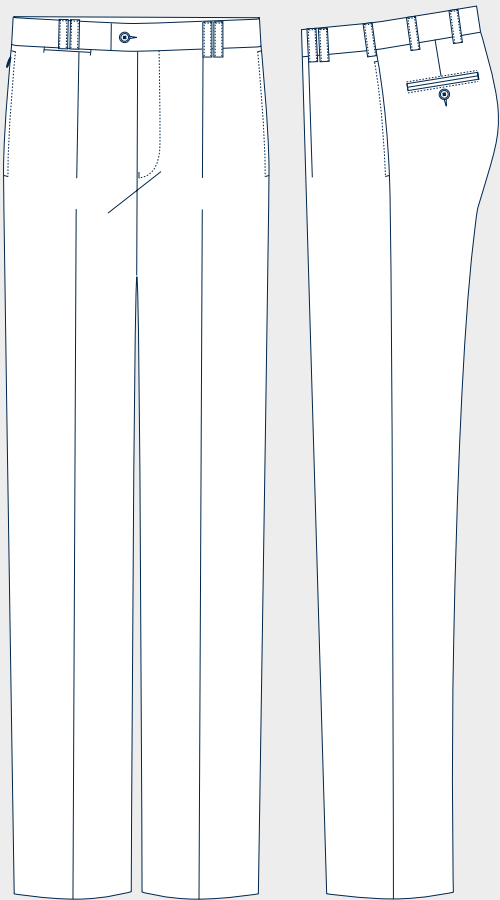
Superior drape

## SIZE RANGE

77R - 102R

87S - 117S

# GLEBEDJ 929



black  
BBLK

charcoal  
BCHR

taupe  
BTAG

navy  
BNVB

## STYLE

GLEBE - 1 pleat trouser

## FABRIC

929

## COMPOSITION

52% Polyester, 45% Wool, 3% Lycra

## GARMENT FEATURES



Wool rich with  
lycra ease



Travel friendly



Machine  
washable



Easy wearing



Superior drape



High quality  
fabric



Security mobile  
phone pocket

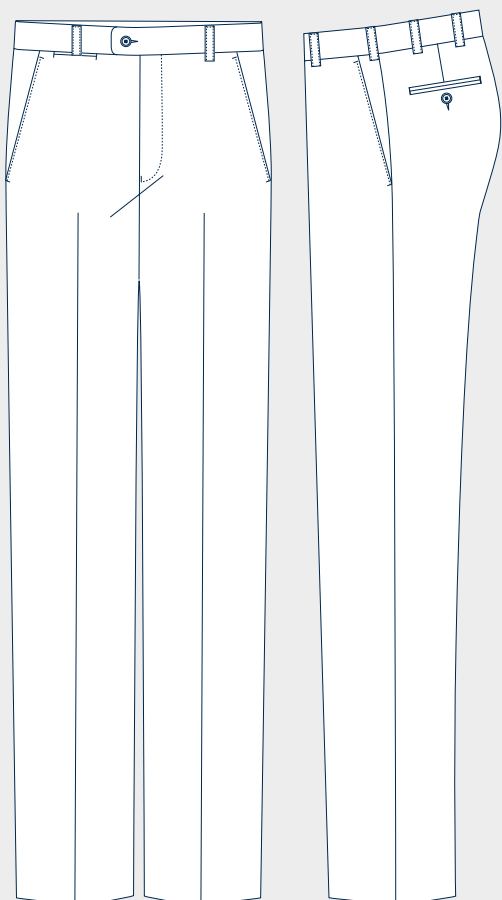
## SIZE RANGE

77R - 102R

87S - 117S



# RITZ 929



black  
BBLK

charcoal  
BCHR

## STYLE

RITZ - Flat front trouser

## FABRIC

929

## COMPOSITION

52% Polyester, 45% Wool, 3% Lycra

## GARMENT FEATURES



Wool rich with  
lycra ease



Travel friendly



Machine  
washable



Easy wearing



Superior drape



High quality  
fabric



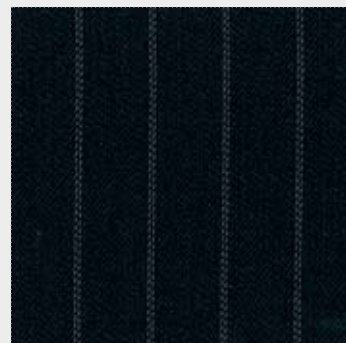
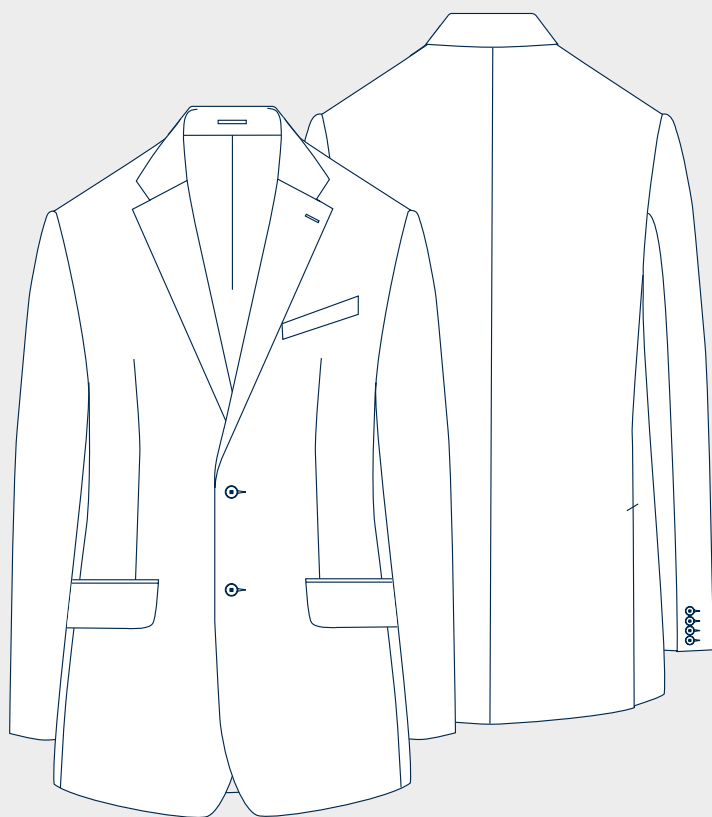
Security mobile  
phone pocket

## SIZE RANGE

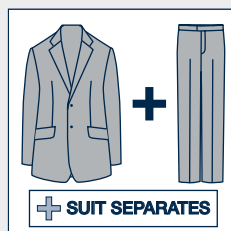
77R - 102R

87S - 112S

# JKTSS 985



black  
VBLK



## STYLE

JKBSSB

## FABRIC

985

## COMPOSITION

84% Polyester, 16% Rayon

## GARMENT FEATURES



Travel friendly



Easy wearing



Superior drape



High quality  
fabric

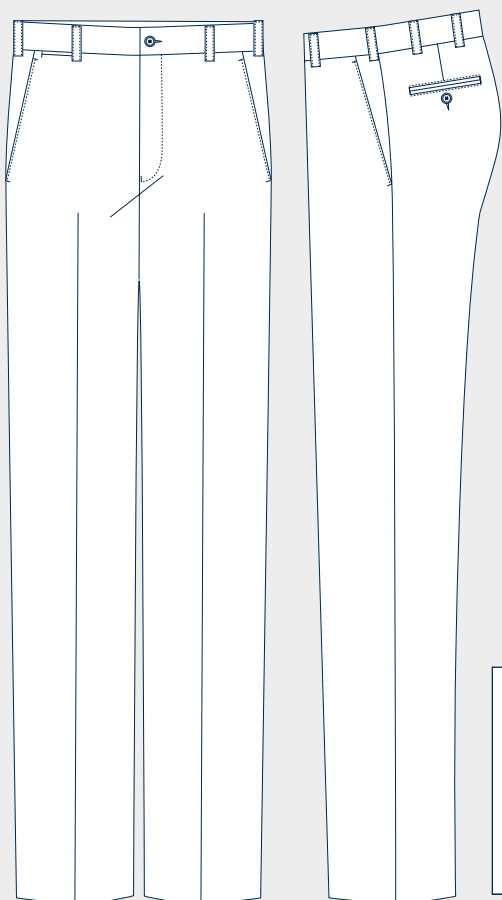


High performance  
all day wearing

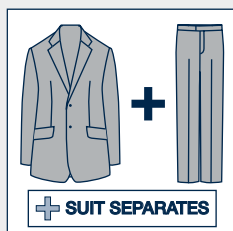
## SIZE RANGE

92R - 122R

# TRFFB 985



black  
VBLK



## STYLE

TRFFB - Flat front trouser

## FABRIC

985

## COMPOSITION

84% Polyester, 16% Rayon

## GARMENT FEATURES



Travel friendly



Easy wearing



Superior drape



High quality  
fabric



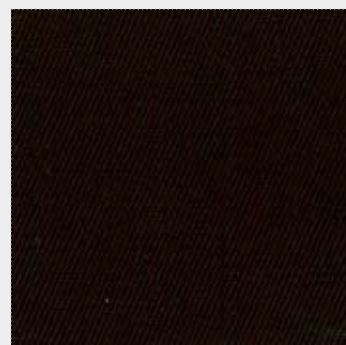
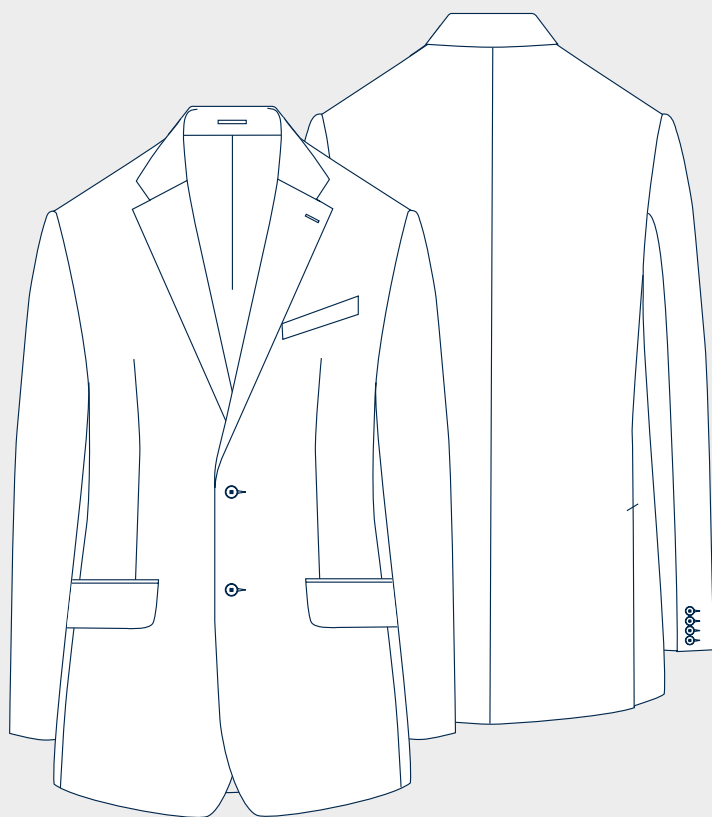
High performance  
all day wearing

## SIZE RANGE

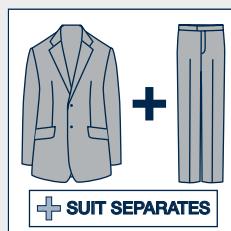
77R - 102R

87S - 112S

# JKTSS 421



black  
BBLK



## STYLE

JKBSSB

## FABRIC

421

## COMPOSITION

65% Polyester, 35% Rayon

## GARMENT FEATURES



Travel friendly



Easy wearing



Superior drape



High quality  
fabric

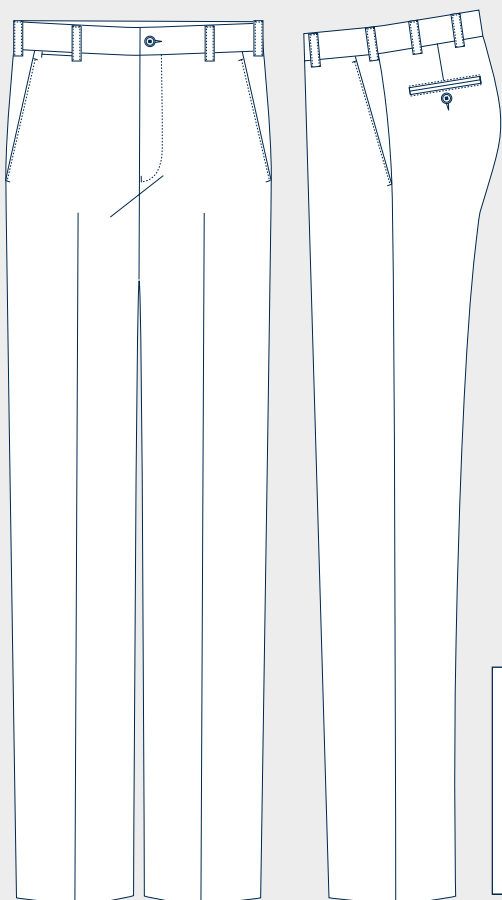


High performance  
all day wearing

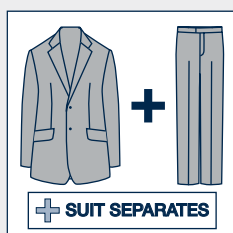
## SIZE RANGE

92R - 122R

# TRFFB 421



black  
BBLK



## STYLE

TRFFB - Flat front trouser

## FABRIC

421

## COMPOSITION

65% Polyester, 35% Viscose

## GARMENT FEATURES



Travel friendly



Easy wearing



Superior drape



High quality  
fabric



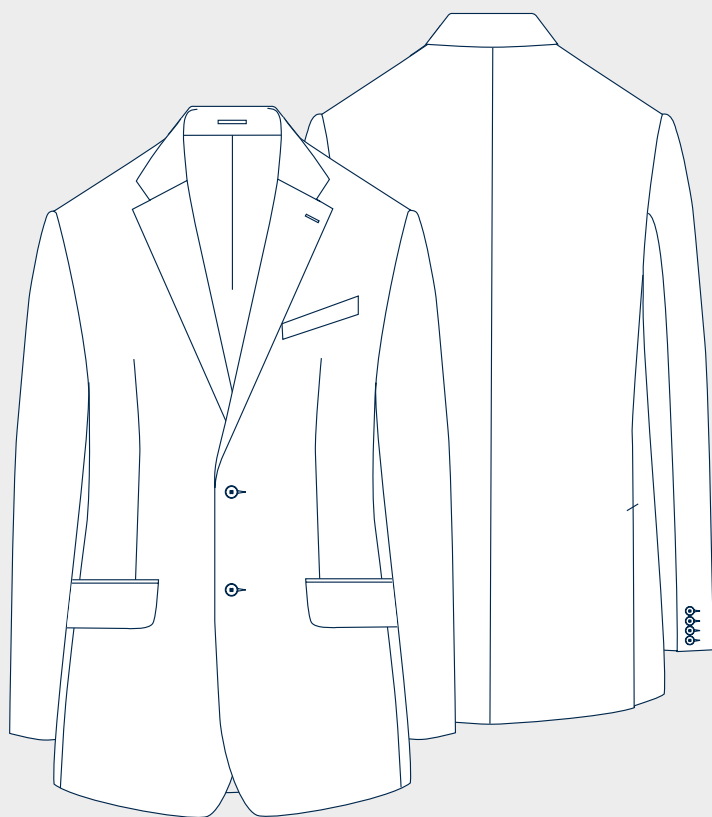
High performance  
all day wearing

## SIZE RANGE

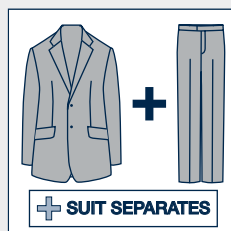
77R - 102R

87S - 112S

# JKTSS 411



black  
RBLK



## STYLE

JKTSSB

## FABRIC

411

## COMPOSITION

65% Polyester, 33% Viscose, 2% Elastane

## GARMENT FEATURES



Travel friendly



Easy wearing



Superior drape



High quality  
fabric



Stretch  
fabric

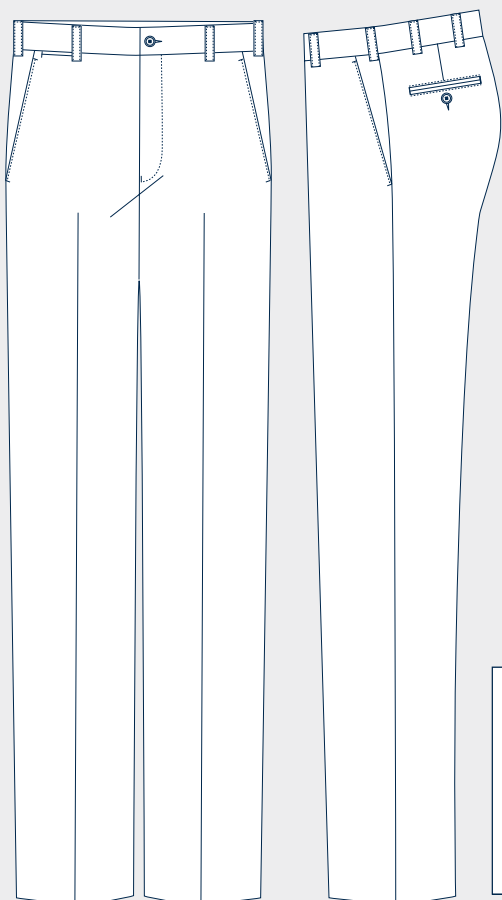


High performance  
all day wearing

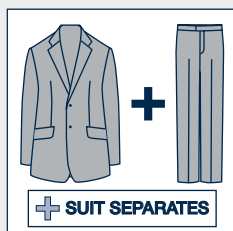
## SIZE RANGE

92R - 122R

# TRFFB 411



black  
RBLK



## STYLE

TRFFB - Flat front trouser

## FABRIC

411

## COMPOSITION

65% Polyester, 33% Viscose, 2% Elastane

## GARMENT FEATURES



Travel friendly



Easy wearing



Superior drape



High quality  
fabric



Stretch  
fabric



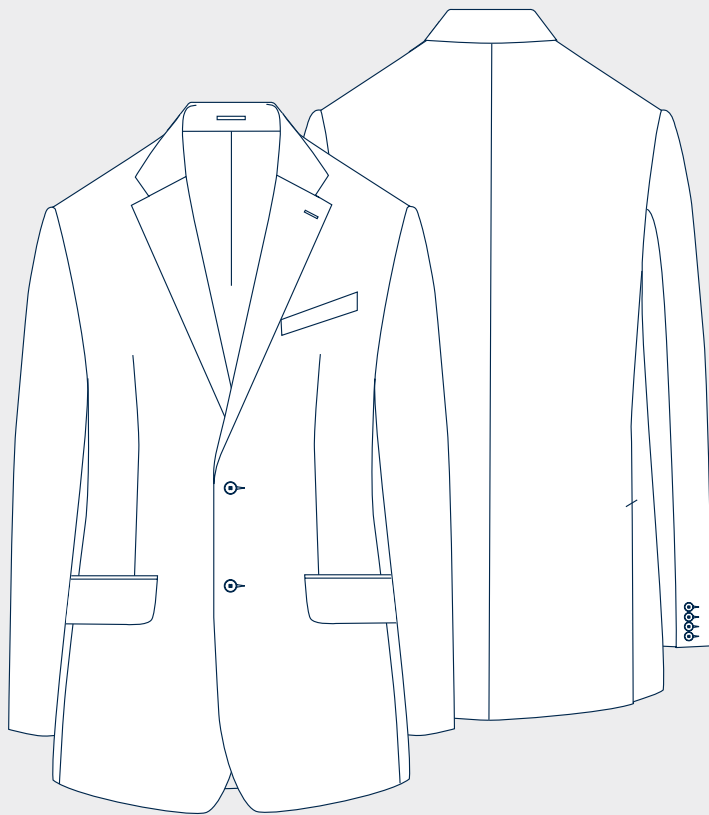
High performance  
all day wearing

## SIZE RANGE

77R - 97R

102S - 112S

# JKTSS 009



grey  
VLGY



## STYLE

JKTSSB

## FABRIC

009

## COMPOSITION

60% Polyester, 35% Viscose

## GARMENT FEATURES



Travel friendly



Easy wearing



Superior drape



High quality  
fabric



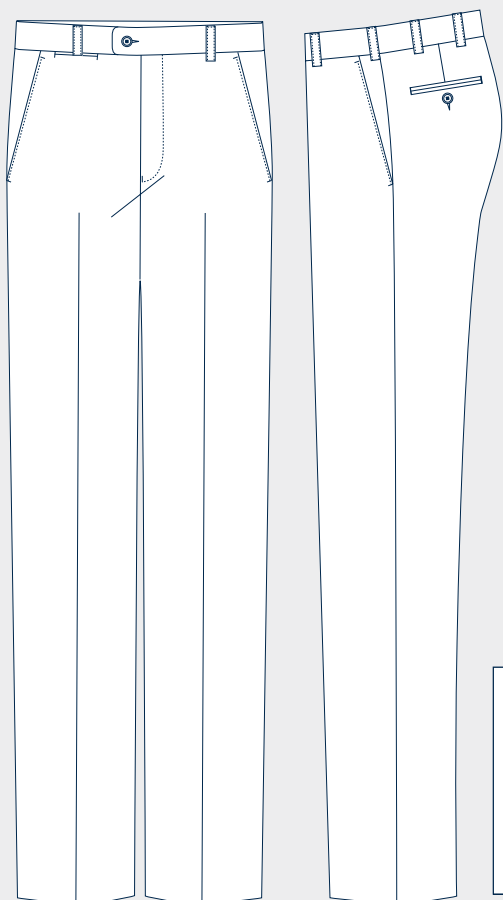
High performance  
all day wearing

## SIZE RANGE

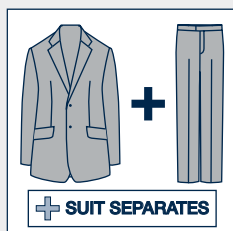
92R - 122R



# TRFFB 009



grey  
VLGY



## STYLE

TRFFB -Flat front trouser

## FABRIC

009

## COMPOSITION

60% Polyester, 35% Viscose

## GARMENT FEATURES



Travel friendly



Easy wearing



Superior drape



High quality  
fabric



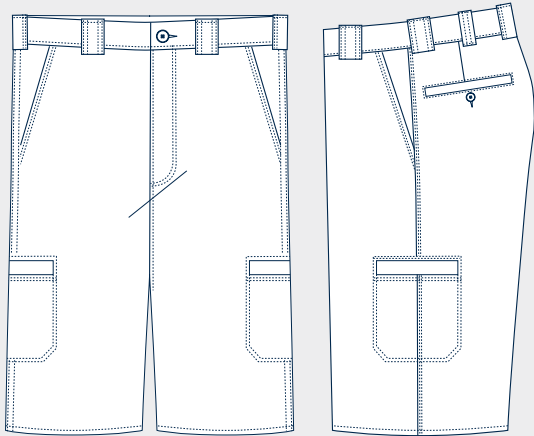
High performance  
all day wearing

## SIZE RANGE

77R - 102R

87S - 107S

# TIMBER 979



## STYLE

Timber

## FABRIC

979

## COMPOSITION

100% Cotton

## GARMENT FEATURES



Machine washable



Easy wearing



Superior drape



High quality fabric

## SIZE RANGE

77R - 117R



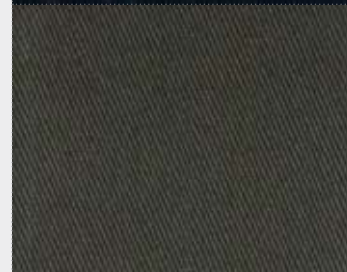
black  
BBLK



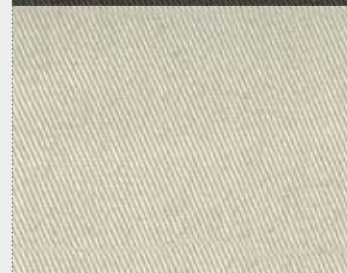
donkey  
BIRO



navy  
BNVB



sage  
BSGE

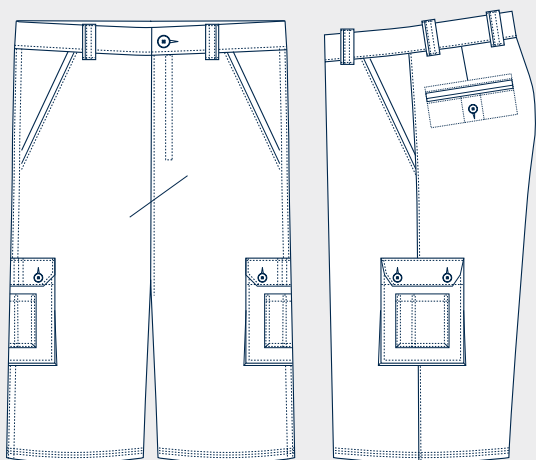


string  
BSTG



taupe  
BTAG

# NOOSAA 737



navy  
BNVB

stone  
BSTN

## STYLE

NOOSA - Ticketed as fred bracks

## FABRIC

737

## COMPOSITION

100% Cotton

## GARMENT FEATURES



Travel friendly



Machine  
washable



Easy wearing



Superior drape

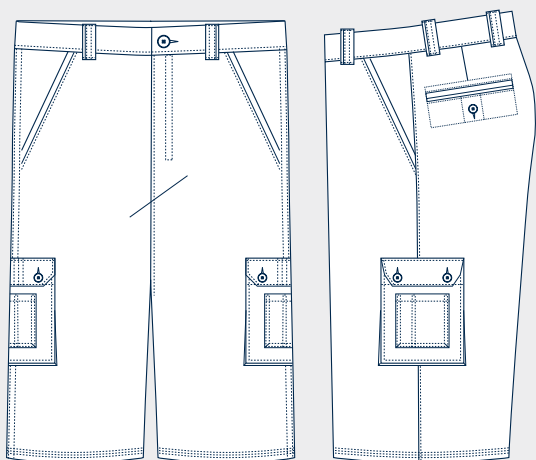


High quality  
fabric

## SIZE RANGE

30 - 46

# NOOSAA 979



## STYLE

NOOSA - Ticketed as fred bracks

## FABRIC

979

## COMPOSITION

100% Cotton

## GARMENT FEATURES



Machine washable



Easy wearing



Superior drape

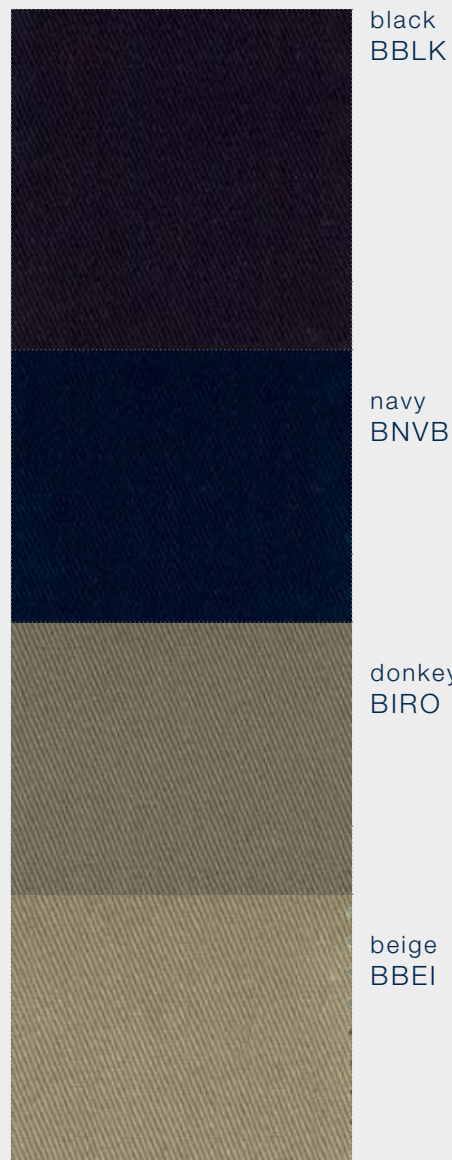
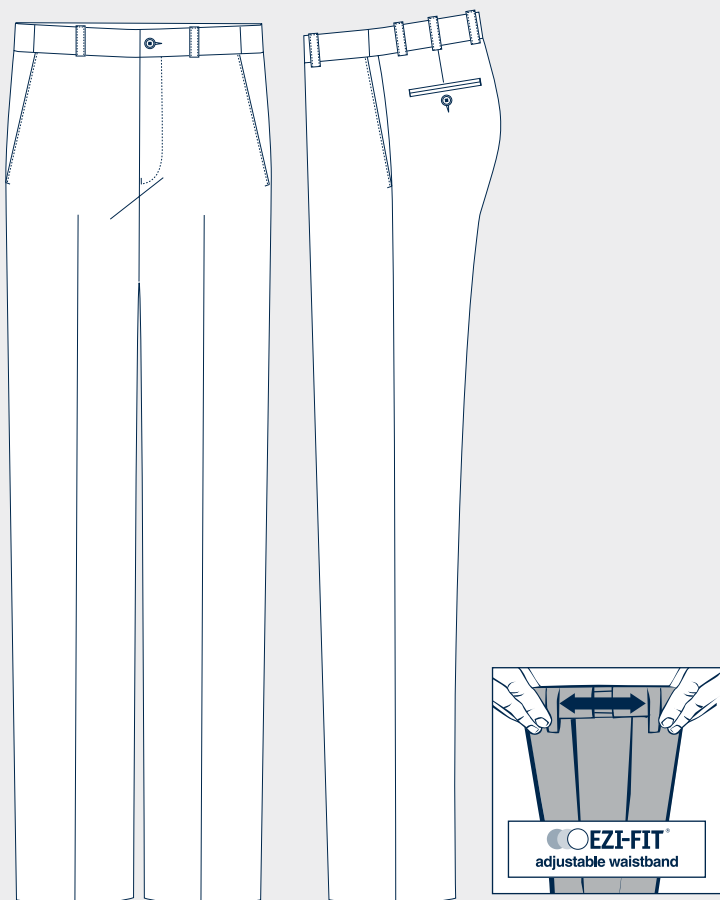


High quality fabric

## SIZE RANGE

30 - 42

# TONY 979



## STYLE

TONY

## FABRIC

979

## COMPOSITION

100% Cotton

## GARMENT FEATURES



Machine washable



Easy wearing



Superior drape



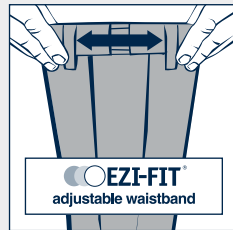
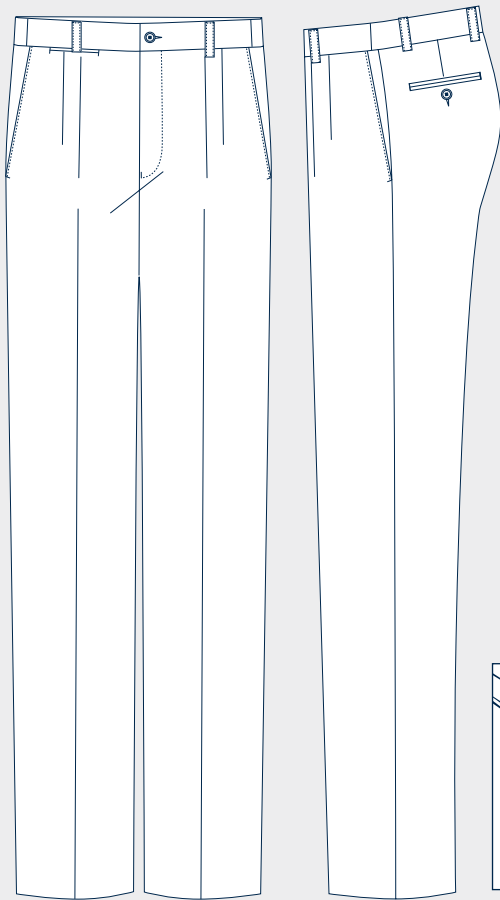
High quality fabric

## SIZE RANGE

82R - 102R

87S - 112S

# TROYES 979



navy  
BNVB

donkey  
BIRO

string  
BSTG

## STYLE

TROY

## FABRIC

979

## COMPOSITION

100% Cotton

## GARMENT FEATURES



Wool rich with  
lycra ease



Travel friendly



Machine  
washable



Easy wearing



Superior drape



High quality  
fabric



Security mobile  
phone pocket

## SIZE RANGE

82R - 102R

87S - 112S

# STOCKISTS

---

## CUSTOMER SERVICE

### Bracks Head Office

Phone: (02) 9316 2890

Fax: 1800 81 84 86

## AGENT DETAILS

### SYDNEY

#### Jacqui Austin

Mobile: 0488 277 734

Fax: 1800 81 84 86

Email: jacqui.austin@gazal.com.au

### NSW

#### David Pickin

Phone: (02) 4951 1596

Fax: (02) 4951 3188

Mobile: 0429 399 137

Email: davidpickin@bigpond.com

### QLD

#### Daniel Erbacher

Phone: (07) 3356 9477

Fax: (07) 3356 9577

Mobile: 0417 728 855

Email: daniel.erbacher@gazal.com.au

### VIC

#### Paul Sullivan

Phone: (03) 9417 6999

Fax: (03) 9417 6633

Mobile: 0411 414 115

Email: pauls@sullivanagencies.com.au

### SA

#### Bill Walkley

Phone: (08) 8234 0840

Fax: (08) 8352 7006

Mobile: 0407 795 956

Email: b.p.walkley@bigpond.com

### TAS

#### Terry Corcoran

Phone: (03) 6367 6227

Fax: (03) 6367 6221

Mobile: 0439 080 387

Email: corcs7@bigpond.com