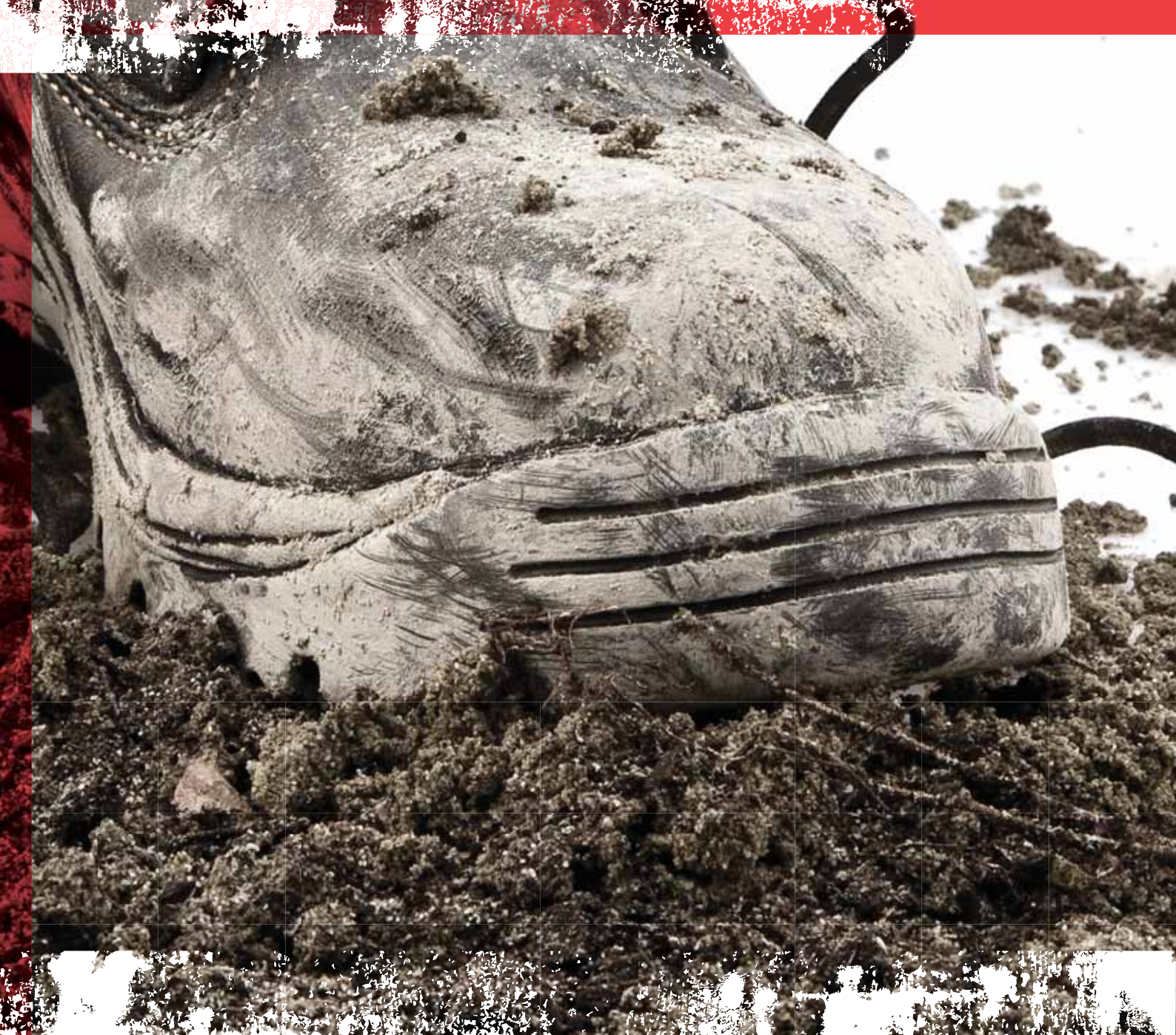


**SHOW THE EARTH
WHO'S BOSS**



BULLDOG TOUGH
MACK CATALOGUE





Sizes: 4-13 Half Sizes: 6½ - 10½

Built strong to get the tough jobs done, these **elastic-sided** boots come with an antistatic thermoplastic **urethane outsole resistant** to 160°C heat, polyurethane midsole and **steel toecap** with protection strip and a full length EVA footbed.



MTA RANGE

PUT A PAIR OF THESE STEEL TOE BAD BOYS ON YOUR FEET AND NEVER LET ANYTHING OR ANYONE STAND IN YOUR WAY AGAIN.

PISTON



Sizes: 4-13 Half Sizes: 6½ - 10½

Need a boot with grunt? Try these 125mm, **fully lined, elastic sided boots** with an antistatic TPU outsole that's heat resistant to 160°C and polyurethane midsole with bumpcap.

TURBO



Sizes: 4-13 Half Sizes: 6½ - 10½

Make your mark on the earth in this pair of fully lined, lace-up **hiker boots** with a **padded ankle** and tongue, antistatic TPU outsole that's heat resistant to 160°C and polyurethane midsole with bumpcap.

CHARGE



Sizes: 4-13 Half Sizes: 6½ - 10½

Throw your feet into a pair of **fully lined, lace-up ankle boots** with **padded ankle** and tongue, an **antistatic TPU outsole** that's heat resistant to 160°C and **polyurethane midsole** with bumpcap.

BOOST



Sizes: 4-13 Half Sizes: 6½ - 10½

Never put a foot wrong in a pair of 125mm, fully lined, **non safety, elastic sided boots** with an **antistatic TPU outsole** that's **heat resistant to 160°C** and polyurethane midsole with bumpcap.

SUPERTEC

PUT YOUR FOOT DOWN AND DEMAND THE BEST. MACK'S
GIVES YOUR FEET PROTECTION FROM THE TOUGHEST ELEMENTS.
STEEL TOE, RUBBER SOLES AND A HEAVY-DUTY, GO ANYWHERE.
PUT 'EM ON AND WEAR 'EM OUT.

Sizes: 3-15 Half Sizes: 6½ - 10½

Tough as they come, the Bulldog is a 140mm lace-up ankle boot with a comfortable padded collar and tongue, Nitrile rubber outsole resistant to 300°C heat, lightweight midsole, steel toecap with protection strip for ultimate safety and shock absorbing polyurethane footbed, made so the ground worships the shoes you walk on.



Sizes: 4-13 Half Sizes: 6½ - 10½

Stand tall in these durable lace-up ankle boots, fully lined and featuring a Nitrile rubber outsole resistant to 300°C heat with a lightweight midsole, steel toecap with protection strip and awesome shock absorbing polyurethane footbed.



Sizes: 4-15 Half Sizes: 7½ - 10½

Rugged and ready for anything, these water proof, lace-up hiker boots offer a Nitrile rubber outsole resistant to 300°C heat, lightweight midsole, steel toecap with protection strip and a shock absorbing polyurethane footbed.

**SUPERTEC RANGE
MENTS WITH
HERE ATTITUDE.**



RIGGER



Sizes: 6-13

Kick on these fully lined pull-on boots with a **Nitrile rubber outsole/lightweight midsole**, outsole resistant to a scorching **300°C heat**, **steel toecap with protection** strip and shock absorbing polyurethane footbed.

RIDER



Sizes: 4-13

Half Sizes: 6½ - 10½

This fully lined, **elastic sided boot** offers a gutsy **Nitrile rubber outsole/lightweight** midsole with the outsole resistant to 300°C heat. Giving it more grunt is a tough steel toecap with **protection strip and shock absorbing polyurethane footbed** for added comfort.

STEEL



Sizes: 3-15

Half Sizes: 6½ - 10½

Brutally tough but genuinely comfortable, these lace-up, **fully lined shoes** offer a padded collar and tongue, Nitrile rubber outsole **resistant to 300°C heat**, **lightweight midsole**, steel toecap with **protection strip** and a shock absorbing polyurethane footbed.

FIELD



Sizes: 3-15

Half Sizes: 6½ - 10½

Play hard in a pair of hiker style, lace-up shoes, fully lined with a **padded collar and tongue** for comfort, a Nitrile rubber outsole resistant to 300°C heat, **lightweight midsole**, **steel toecap** with protection strip and a **shock absorbing** polyurethane footbed.

COMPOSITE

MACK'S COMPOSITE RANGE IS METAL FREE AND LIGHTWEIGHT AND IS PERFECT FOR THE PLANE, BUT EVEN BETTER ON THE GROUND - WHERE THEY CAN BEAT THE HEAT AND KICK EVERYDAY CHALLENGES TO THE KERB.

DINGO



Sizes: 6-13 Half Sizes: 7½ - 10½

Take a stand against the elements in our lace-up hiker boots, fully lined with a padded collar and tongue, and featuring a Nitrile rubber outsole resistant to 300°C heat with a lightweight midsole, airport friendly composite toecap and a shock absorbing polyurethane footbed.

TITAN



Sizes: 4-13 Half Sizes: 6½ - 10½

Break new ground in these lace-up ankle boots, fully lined with a padded collar and tongue, and featuring a Nitrile rubber outsole resistant to 300°C heat with a lightweight midsole, airport friendly composite toecap and a shock absorbing polyurethane footbed.

THOR



Sizes: 4-13

Trample whatever comes your way in a pair of hiker-style, lace-up boots, fully lined with a padded collar and tongue, a Nitrile rubber outsole resistant to 300°C heat with a lightweight midsole, airport friendly composite toecap and a shock absorbing polyurethane footbed.

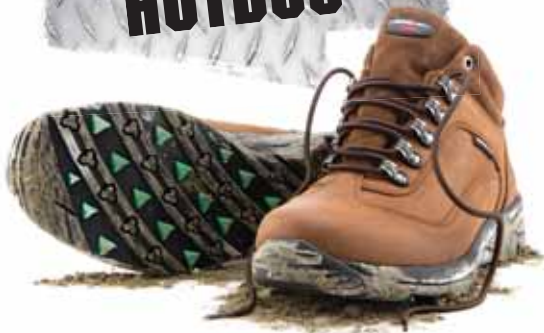
HIGHWAY



Sizes: 6-13

Get some serious stuff done with these 230mm lace-up, high leg boots. Fully lined with a padded collar and tongue, a Nitrile rubber outsole resistant to 300°C heat and a lightweight midsole, airport friendly composite toecap plus a shock absorbing polyurethane footbed.

HOTDOG



Sizes: 3-12

Tenacious enough to take you anywhere, this 100mm lace-up hiker boot is fully lined, with a padded collar and tongue, rubber nitrile outsole resistant to 300°C heat and a full length EVA footbed.

HIKING & CASUAL

IF YOU'RE GOING TO TAKE ON THE DAY FEET FIRST, DO IT IN COMFORT AND STYLE WITH OUR GUTSY HIKING AND CASUAL RANGE LEADING THE WAY.

ULTRA



Sizes: 4-15

Half Sizes: 6½ - 10½

Create your own beaten tracks in these 140mm lace-up hiker boots, fully lined with a padded collar and tongue, and featuring a Nitrile rubber outsole resistant to 300°C heat with a lightweight midsole and a shock absorbing polyurethane footbed.

FLINDERS



Sizes: 3-13

Half Sizes: 6½ - 10½

Need a rugged pair of off-roaders? Chuck on these 115mm water proof, lace-up hiker boots, offering a Nitrile rubber outsole resistant to 300°C heat with a lightweight midsole all supported by a shock absorbing polyurethane footbed.

TIMBERLITE



Sizes: 3-14

Half Sizes: 6½ - 10½

Go hard or go home in a pair of 115mm lace-up hiker boots bearing a Nitrile rubber outsole resistant to 300°C heat with a lightweight midsole and a shock absorbing polyurethane footbed.

DERBY



Sizes: 4-13

Half Sizes: 6½ - 10½

Pull on a pair of these lace-up shoes with rubber outsole resistant to 160°C heat and full-length EVA footbed and you'll know what it means to step out with confidence. Hit the ground running in style.

WELTED

WALK WHEREVER YOU WANT, WHENEVER YOU WANT, THANKS TO PREMIUM PROTECTION SAFETY FOOTWEAR, DESIGNED TO TACKLE WHATEVER COMES YOUR WAY.

■ MASTER



Sizes: 6-14 Half Sizes: 6½ - 10½

We call it 'Master' for a reason. This durable lace-up ankle boot is fully lined, has a padded collar and tongue, a Goodyear welted rubber outsole that's heat resistant to 300°C, steel toe cap with protection strip and full length EVA footbed.

MACKBOOTS.COM.AU
1300 350 216

IT'S TIME TO TAKE A STAND AGAINST THE ELEMENTS. WHATEVER THE DAY THROWS AT YOU, IT'S TIME TO KICK IT BACK HARD. NO MATTER HOW HARSH THE ENVIRONMENT OR HOW ROUGH THE ROAD AHEAD, NOTHING'S GOING TO STAND IN YOUR WAY ANY MORE. DURABLE, RELIABLE AND READY FOR WHEN THINGS GET RUGGED, OUR BOOTS ARE BUILT TO TACKLE ANYTHING. JUST QUIETLY, THEY'RE BLOODY COMFORTABLE TOO. SO WHEN THE GOING GETS TOUGH, SHOW THE EARTH WHO'S BOSS AND IF IT EVER ARGUES, LET YOUR MACKS DO THE TALKING.

