

**Hard**

**Yakka**

**Nothing's Tougher**



# Hard Yakka Product Manual



# Hard Yakka Coveralls & Overalls



## 00040 Hi-Visibility Two Tone Lightweight Cotton Drill Coverall

- 185gsm, pre-shrunk 100% cotton fabric
- Left chest pocket with pencil and ruler partition
- Elasticised waist
- Easy-fit set-in sleeves with gusset
- Heavy-duty plastic stud front closure
- Mobile phone pocket, double layered pocket lining and two side pockets
- Complies with AS/NZS 1906.4:1997 High-Visibility Materials and AS/NZS 4602:1999 High-Visibility Safety Garments Class Day

**COLOURS** Orange/Navy (335), Yellow/Navy (770)

**SIZES** 77R-107R, 74L-94L, 87ST-132ST



## 00108 Hi-Visibility Two Tone Cotton Drill Coverall with 3M Tape

- 310gsm, pre-shrunk 100% cotton fabric
- 3M 9910 50mm reflective tape suitable for light industrial wash
- Leg tape above gumboot line
- Left chest pocket with pencil and ruler partition
- Mobile phone pocket, double layered pocket lining and two side pockets
- Utility pocket and elasticised waist
- Complies with AS/NZS 1906.4:1997 High-Visibility Materials and AS/NZS 4602:1999 High-Visibility Safety Garments Class Day/Night

**COLOURS** Orange/Navy (335), Yellow/Navy (770)

**SIZES** 77R-107R, 74L-94L, 87ST-132ST



## 00122 Hi-Visibility Cotton Drill Coverall with 3M Tape

- 310gsm, pre-shrunk 100% cotton fabric
- 3M 50mm 8910 reflective tape, leg tape above gumboot line
- Left chest pocket with pencil and ruler partition
- Mobile phone pocket, double layered pocket lining and two side pockets
- Complies with AS/NZS 1906.4:1997 High-Visibility Materials
- Safety Orange: Complies with AS/NZS 4602:1999 High-Visibility Safety Garments Class Day/Night
- Navy: Complies with AS/NZS 4602:1999 High-Visibility Safety Garments Class Night

**COLOURS** Safety Orange (331), Navy (438)

**SIZES** 82R-122R, 87ST-132ST





#### 01508 Hi-Visibility Cotton Drill Action Back with 3M Tape

- 310gsm, pre-shrunk 100% cotton fabric
- 3M 9910 50mm reflective tape suitable for light industrial wash
- Leg tape above gumboot line
- Elastic straps and elasticised waist
- Non-spill right chest pocket and left chest pocket with pencil partition
- Mobile phone pocket, double layered pocket lining and two side pockets
- Heavy-duty nickel plated studs
- Complies with AS/NZS 1906.4:1997 High-Visibility Materials and AS/NZS 4602:1999 High-Visibility Safety Garments For Class Day/Night. Only when combined with an upper garment of the same colour and has 50mm reflective tape

**COLOURS** Orange/Navy (335), Yellow/Navy (770)

**SIZES** 77R-117R, 74L-94L, 92ST-132ST



#### 00126 Hi-Visibility Two Tone Cotton Drill Coverall

- 310gsm, pre-shrunk 100% cotton fabric
- Left chest pocket with pencil and ruler partition
- Heavy-duty nickel plated studs
- Mobile phone pocket, double layered pocket lining and two side pockets
- Easy-fit raglan sleeves and elasticised waist
- Utility pocket
- Complies with AS/NZS 1906.4:1997 High-Visibility Materials and AS/NZS 4602:1999 High-Visibility Safety Garments Class Day

**COLOURS** Orange/Navy (335), Yellow/Navy (770)

**SIZES** 77R-117R, 74L-94L, 92ST-132ST



#### 01526 Hi-Visibility Two Tone Cotton Drill Action Back Overall

- 310gsm, pre-shrunk 100% cotton fabric
- Left chest pocket with pencil partition
- Elastic straps and elasticised waist
- Heavy-duty nickel plated studs
- Ruler leg pocket
- Mobile phone pocket, double layered pocket lining and two side pockets
- Complies with AS/NZS 1906.4:1997 and AS/NZS 4602:1999 High-Visibility Safety Garments For Class Day. Only when combined with an upper garment of the same colour

**COLOURS** Orange/Navy (335), Yellow/Navy (770)

**SIZES** 77R-117R, 74L-94L, 92ST-132ST

# Hard Yakka Coveralls & Overalls



## 00010 Cotton Drill Coverall

- 310gsm, pre-shrunk 100% cotton fabric
- Left chest pocket with pencil and ruler partition
- Heavy-duty nickel plated studs
- Easy-fit raglan sleeves and elasticised waist
- Utility pocket
- Mobile phone pocket, double layered pocket lining and two side pockets
- Safety Orange: Complies with AS/NZS 1906.4:1997 High-Visibility Materials and AS/NZS 4602:1999 High-Visibility Safety Garments Class Day

**COLOURS** White (060), Khaki (260), Safety Orange (331), Azure Blue (402), **Navy (438)**, Green (518), Grey (620)

**SIZES** 67R-122R, 74L-94L, 87ST-132ST



## 00015 Poly Cotton Coverall

- 210gsm, 65% polyester 35% cotton fabric
- Left chest pocket with pencil and ruler partition
- Heavy-duty nickel plated studs
- Easy-fit raglan sleeves and elasticised waist
- Utility pocket
- Mobile phone pocket, double layered pocket lining and two side pockets

**COLOURS** White (060), Orange (332), ~~Red (338)~~, Blue Medit (406), Navy (438), Green (518), Grey (620)

**SIZES** 77R-122R, 74L-94L, 87ST-132ST (72R in Navy only)



## 00030 Lightweight Cotton Drill Coverall

- 185gsm, pre-shrunk 100% cotton fabric
- Left chest pocket with pencil and ruler partition
- Easy-fit raglan and gusset sleeves
- Nylon studs and elasticised waist
- Utility pocket
- Mobile phone pocket, double layered pocket lining and two side pockets
- Safety Orange: Complies with AS/NZS 1906.4:1997 High-Visibility Materials and AS/NZS 4602:1999 High-Visibility Safety Garments Class Day

**COLOURS** White (060), Khaki (260), Safety Orange (331), Red (338), **Blue Medit (406)**, Navy (438)

**SIZES** 77R-122R, 74L-94L, 87ST-132ST  
(72R in Navy, Safety Orange, Blue Medit, Khaki)



#### 00230 Proban Cotton Drill Coverall

- 340gsm, pre-shrunk 100% cotton fabric
- Proban treatment, protection against sparks and flame
- Left chest pocket with pencil and ruler partition
- Heavy-duty nickel plated studs
- Easy-fit raglan sleeves and elasticised waist
- Utility pocket
- Mobile phone pocket, double layered pocket lining and two side pockets

**COLOURS** Gold (246), Navy (438)

**SIZES** 72R-122R, 74L-94L, 87ST-132ST



#### 01010 Bib & Brace Cotton Drill Overall

- 310gsm, pre-shrunk 100% cotton fabric
- Left chest pocket with pencil partition
- Adjustable straps with heavy duty nickel buckles
- Heavy-duty nickel plated studs
- Ruler leg pocket and two side pockets
- Mobile phone pocket, double layered pocket lining and two side pockets

**COLOURS** White (060), Khaki (260), Navy (438), ~~Green (518)~~, ~~Grey (620)~~

**SIZES** 67R-122R, 74L-94L, 87ST-132ST (67R and 122R not avail. in Grey)



#### 01515 Poly Cotton Action Back Overall

- 210gsm, 65% polyester 35% cotton fabric
- Elastic straps and elasticised waist
- Left chest pocket with pencil partition
- Mobile phone pocket, double layered pocket lining and two side pockets
- Ruler leg pocket
- Heavy-duty nickel plated studs

**COLOURS** Blue Medit (406), Navy (438)

**SIZES** 77R-122R, 74L-94L, 87ST-132ST (72R in Navy only)



#### 01555 Tradesman Cotton Drill Action Back Overall

- 310gsm, pre-shrunk 100% cotton fabric
- Elastic straps and elasticised waist
- Left chest pocket with pencil partition
- Mobile phone pocket, double layered pocket lining and two side pockets
- Heavy-duty nickel plated studs
- Pager loop inside left front and ruler leg pocket
- Safety Orange: Complies with AS/NZS 1906.4:1997 High-Visibility Materials and AS/NZS 4602:1999 High-Visibility Safety Garments Class Day

**COLOURS** White (060), Khaki (260), **Safety Orange (331)**, Navy (438), Green (518), Grey (620)

**SIZES** 72R-122R, 74L-94L, 87ST-132ST (67R in White only)

# Hard Yakka Coveralls & Overalls



Industrial



## 01501 Kids Cotton Drill Action Back Overall

- 285gsm, pre-shrunk 100% cotton fabric
- Elastic straps
- Non-spill right chest pocket
- Left chest pocket with pencil partition
- Patch hip pocket
- Elasticised waist
- Utility pocket

**COLOURS** Khaki (260), Navy (438)

**SIZES** SSM, SM, M, L



Legends



## 01900 Legends Cotton Duck Weave Action Back Overall

- 345gsm, 100% cotton duck weave silicone washed double strength pre-shrunk canvas
- Cargo pockets that have provisions for mobile phone, note pad, pencil pockets and tools
- Ruler pocket containing extra tool and pencil partition
- Reinforcements with Cordura® patches
- Cordura® knee pad provisions
- Non-spill chest pocket with pencil pocket
- All stress points bar-tacked and heavyweight poly cotton pocketing

**COLOURS** Khaki (260), Navy (438)

**SIZES** 77R-107R, 74L-94L, 92ST-132ST

# Hard Yakka Trousers



## 02900 Legends Cotton Duck Weave Trousers

- 345gsm, 100% cotton duck weave, silicone washed double strength pre-shrunk canvas
  - Cargo pockets that have provisions for mobile phone, note pad, pencil pockets and tools
  - Ruler pocket containing extra tool and pencil partition, plus concealed gadget pocket on waistband
  - Reinforcements with Cordura® patches
  - Cordura® knee pad provisions
  - Heavy-duty nylon zip fly
  - All stress points bar-tacked and heavyweight poly cotton pocketing
- COLOURS** Khaki (260), Navy (438), Green (518), Black (602)  
**SIZES** 72R-112R, 74L-94L, 87ST-132ST



## 02906 Legends Extra Light Cotton Duck Weave Trousers

- 260gsm, 100% cotton duck weave, silicone washed double strength pre-shrunk canvas
  - Cargo pockets that have provisions for mobile phone, note pad, pencil pockets and tools
  - Ruler pocket containing extra tool and pencil partition, plus concealed gadget pocket on waistband
  - Reinforcements with Cordura® patches
  - Cordura® knee pad provisions
  - Heavy-duty nylon zip fly
  - All stress points bar-tacked and heavyweight poly cotton pocketing
- COLOURS** Khaki (260), **Navy (438)**  
**SIZES** 72R-112R, 74L-94L, 87ST-132ST



# Hard Yakka Trousers



## 02538 Koolgear Lightweight Cotton Drill Trousers

- 185gsm, pre-shrunk 100% cotton fabric
- Nylon zip fly
- Pleat front
- Waistband with seven belt loops and button closure
- Patch hip pocket
- Two side pockets and fob pocket

**COLOURS** Khaki (260), Navy (438), Green (518)

**SIZES** 77R-122R, 74L-94L, 87ST-132ST



## 02660 Koolgear Cotton Twill Trousers with Ventilation

- 270gsm, 100% cotton twill fabric
- Soft wash finish
- Ventilated legs and back yoke with cotton mesh
- Yoke cut on bias for extra movement
- Multiple pockets for mobile phone, pencil and ruler
- Two back hip patch pockets

**COLOURS** Khaki (260), Navy (438), Green (518)

**SIZES** 72R-112R, 74L-94L, 87ST-132ST



## 02500 Generation Y Cotton Drill Trousers

- 310gsm, pre-shrunk 100% cotton fabric
- Cargo and mobile phone bellow pockets with mitred flaps
- Waistband with five wide belt loops
- Back darts
- Mitred patch hip pockets with mitred flaps
- Stud button front closure
- Metal fly zip

**COLOURS** Stone (057), Khaki (260), Navy (438), ~~Green (518)~~, Black (602)

**SIZES** 67R-112R, 74L-94L, 87ST-132ST



## 02590 Generation Y Poly Viscose Permanent Press Trousers with Teflon

- 245gsm, 80% polyester 20% viscose fabric with Teflon finish
- Cargo and mobile phone bellow pockets with mitred flaps
- Waistband with five wide belt loops
- Back darts
- Mitred patch hip pockets with mitred flaps
- Plastic button front closure
- Nylon zip fly

**COLOURS** ~~Putty (040)~~, Midnight (436), Black (602)

**SIZES** 77R-112R, 74L-94L, 87ST-132ST

STYLE DISCONTINUED

Xtreme

Xtreme



#### 02901 Xtreme Cotton Duck Weave Trousers

- 345gsm, 100% cotton duck weave, silicone washed double strength pre-shrunk canvas
- Bellowed cargo pockets with provisions for mobile phone, note pad, pencil pockets and tools
- Ruler pocket containing extra tool and pencil partition
- Reinforcements with Cordura® patches for added durability, plus Cordura® knee pad provisions
- Swing-away pockets that can be tucked into main trouser pocket and Velcro loops for tool belts
- Heavy-duty nylon zip fly
- All stress points bar-tacked and heavyweight poly cotton pocketing

**COLOURS** White (060), **Khaki (260)**, Navy (438), Charcoal (604)

**SIZES** 72R-107R, 74L-94L, 87ST-117ST

#### 02905 Xtreme Hi-Visibility Two Tone Trousers with 3M Tape

- 250gsm, 50% polyester face 50% cotton back drill
- 3M 8910 50mm reflective tape
- Bellowed cargo pockets with provisions for mobile phone, note pad, pencil pockets and tools
- Ruler pocket containing extra tool and pencil partition
- Reinforcements with Cordura® patches for added durability, plus Cordura® knee pad provisions
- Velcro loops for tool belts and plastic D ring on waistband, plus nylon zip fly
- Complies with AS/NZS 1906.4:1997 High-Visibility Materials and AS/NZS 4602:1999 High-Visibility Safety Garments For Class Day/Night. Only when combined with an upper garment of the same colour and has 50mm reflective tape

**COLOURS** Orange/Navy (335), Yellow/Navy (770)

**SIZES** 72R-107R, 74L-94L, 97ST-117ST



# Hard Yakka Trousers



## 02615 Hi-Visibility Cotton Drill Trousers with 3M Tape

- 310gsm, pre-shrunk 100% cotton fabric
- 3M 8910 50mm reflective tape hoops
- Waistband with seven belt loops
- Patch back hip pocket and fob pocket
- Pleat front, metal zip fly and button closure
- Complies with AS/NZS 1906.4:1997 High-Visibility Materials and AS/NZS 4602:1999 High-Visibility Safety Garments For Class Day/Night. Only when combined with an upper garment of the same colour and has 50mm reflective tape

**COLOURS** Safety Orange (331), Navy (438)

**SIZES** 72R-122R, 74L-94L, 87ST-132ST



## 17062 Hi-Visibility Waterproof Spray Trousers with 3M Tape

- 190gsm, 100% nylon breathable waterproof oxford weave fabric
- 3M 8910 50mm reflective tape
- Seam sealed
- Zip gusset bottoms with press studs
- Elastic waist with drawstring and front pockets
- Complies with AS/NZS 1906.4:1997 High-Visibility Materials and AS/NZS 4602:1999 High-Visibility Safety Garments For Class Day/Night. Only when combined with an upper garment of the same colour and has 50mm reflective tape

**COLOURS** Fluoro Orange (296), Fluoro Yellow (297)

**SIZES** S-8XL (See page 85 for matching jacket, style 17162)



## 02501 Cotton Drill Trousers

- 310gsm, pre-shrunk 100% cotton fabric
- Pleated front
- Waistband with seven belt loops and key loop
- Button closure
- Two side pockets and fob pocket
- Back patch hip pocket
- Metal zip fly

**COLOURS** White (060), Khaki (260), Safety Orange (331), Navy (438), Green (518), Black (602), Grey (620)

**SIZES** 72R-122R, 74L-94L, 87ST-132ST



## 02508 Tradesman Cotton Drill Trousers

- 310gsm, pre-shrunk 100% cotton fabric
- Mobile phone pocket
- Double utility pocket and fob pocket
- Waistband with seven belt loops
- Metal zip fly and button closure
- Ruler leg pocket

**COLOURS** White (060), Khaki (260), Navy (438)

**SIZES** 77R-107R, 74L-94L, 87ST-117ST



#### 02511 Double Front Cotton Drill Trouser

- 310gsm, pre-shrunk 100% cotton fabric
- Extra layer of drill fabric over front leg panels
- Waistband with seven belt loops
- Metal zip fly and button closure
- Patch hip pocket
- Two side pockets and fob pocket

**COLOURS** Navy (438), Green (518)

**SIZES** 72R-107R, 74L-94L, 87ST-132ST



#### 02526 Cotton Drill Trouser with Nylon Zip

- 310gsm, pre-shrunk 100% cotton fabric
- Nylon zip fly
- Pleat front
- Waistband with seven belt loops and button closure
- Patch hip pocket
- Two side pockets and fob pocket

**COLOUR** Navy (438)

**SIZES** 77R-112R, 74L-94L, 87ST-132ST



#### 02550 Elastic Waist Cotton Drill Trouser

- 185gsm, pre-shrunk 100% cotton fabric
- Elasticised waistband
- Two side pockets
- Nylon zip fly
- Plain front
- All stress points bar-tacked

**COLOURS** Navy (438), Green (518)

**SIZES** 77R-127R



#### 02579 Double Pleated Front Poly Viscose Trouser with Teflon

- 245gsm, 65% polyester 35% viscose fabric with Teflon
- Double pleated front
- Extendable waistband with seven belt loops and button closure
- Nylon zip fly and fob pocket
- Open back seam
- Two jetted hip pockets, with button and tab on left and button on right

**COLOURS** Light Taupe (287), Dark Navy (437), Black (602), Charcoal (604)

**SIZES** 72R-107R, 74L-94L, 87ST-132ST



# Hard Yakka Trousers



## 02592 Permanent Press Pleat Front Poly Viscose Trousers with Teflon and Supercrease

- 245gsm, 80% polyester 20% viscose fabric with Teflon and Supercrease finishes
- Double pleated front and nylon zip fly
- Extended waistband with seven belt loops and button closure
- Jetted back hip pocket with button closure
- Two side pockets and fob pockets

**COLOURS** Midnight (436), ~~Royal (444)~~, Bottle Green (506), ~~Olive (532)~~, Black (602), Charcoal (604)

**SIZES** 72R-107R, 74L-94L, 87ST-132ST



## 02593 Plain Front Poly Cotton Trousers

- 210gsm, 65% polyester 35% cotton fabric
- Waistband with seven belt loops
- Hook and eye closure
- Nylon zip fly
- Jetted back hip pocket
- Two side pockets
- Fob pocket

**COLOURS** Putty (040), White (060), Dark Navy (437), ~~Olive (532)~~

**SIZES** 72R-107R, 74L-94L, 87ST-132ST



## 02594 Permanent Press Plain Front Poly Viscose Trousers with Teflon and Supercrease

- 245gsm, 80% polyester 20% viscose fabric with Teflon and Supercrease finishes
- Invisible expandable waistband
- Extended waistband with seven belt loops and button closure
- Two jetted back hip pockets with button closure
- Fob pocket
- Two side pockets
- Nylon fly zip

**COLOURS** Putty (040), Brown (210), ~~Blue Grey (410)~~, Midnight (436), Navy (438), ~~Royal (444)~~, ~~Green (518)~~, Olive (532), Black (602), Gunmetal (608)

**SIZES** 72R-107R, 74L-94L, 87ST-132ST



## 09071 Double Pleated Front Wrinkle Resistant Trousers

- 280gsm, 100% cotton fabric
- Double pleated front
- Six belt loops
- Two side pockets and fob pocket
- Two jetted hip pockets with button closure
- Metal zip fly

**COLOURS** Stone (057), Navy (438), Black (602)

**SIZES** 72R-107R, 84L-94L, 92ST-112ST (72R only available in Navy)



#### 22961 Double Pleated Front Poly Wool Trouser

- 230gsm, 55% polyester 45% wool fabric
- Extended waistband with seven belt loops and button closure
- Two jetted back hip pockets with button closure
- Fob pocket
- Two side pockets
- Nylon fly zip
- Open back seam

**COLOURS** Navy (438), Black (602), ~~Dark Charcoal (617)~~

**SIZES** 72R-107R, 74L-94L, 87ST-132ST



#### 03875 Moleskin 5 Pocket Cotton Jean

- 460gsm, 100% cotton weft sateen brushed fabric
- Work jean cut
- Waistband with six belt loops and button closure
- Straight leg, five pocket styling
- Metal zip fly
- Reinforced stress points

**COLOURS** Chamois (008), Navy (438), Olive (532)

**SIZES** 77R-102R, 74L-89L, 87ST-122ST



#### 03876 Moleskin Plain Front Cotton Trouser

- 460gsm, 100% cotton weft sateen brushed fabric
- Waistband with seven belt loops and button closure
- Straight leg styling
- Two side pockets and one jetted hip back pockets
- Straight leg
- Metal zip fly

**COLOURS** ~~Chamois (008)~~, Navy (438), Olive (532)

**SIZES** 77R-102R, 74L-89L, 87ST-122ST



# Hard Yakka Trousers



Industrial



## 03512 14½oz Rigid Denim Jean

- 490gsm, 100% cotton denim fabric
- Work jean cut
- Waistband with seven belt loops and button closure
- Straight leg
- Five pocket styling
- Metal zip fly
- Reinforced and riveted stress points

**COLOUR Navy (438)**

**SIZES 77R-107R, 74L-89L, 87ST-132ST**



Industrial



## 03514 14½oz Enzyme Washed Rigid Denim Jean

- 490gsm, 100% cotton denim fabric
- Enzyme washed
- Work jean cut
- Waistband with seven belt loops and button closure
- Straight leg with five pocket styling
- Metal zip fly
- Reinforced and riveted stress points

**COLOUR Navy (438)**

**SIZES 77R-107R, 74L-89L, 87ST-132ST**



Industrial



## 11013 Fleecy Poly Cotton Track Pant

- 290gsm, 65% polyester 35% cotton fabric
- Low-pill yarn, jersey knit brush back
- Elastic waist with drawstring
- Elastic bottom cuffs
- Two side pockets
- Two needle top stitch

**COLOUR Navy (438)**

**SIZES 8-30**



Industrial



## 44610 Stretch Denim Jean

- 425gsm, 98% cotton 2% elastomer denim fabric
- Lightly washed
- Waistband with six belt loops and button closure
- Straight leg
- Five pocket styling
- Metal zip fly
- Reinforced and riveted stress points

**COLOUR Navy (438)**

**SIZES 72R-102R, 74L-89L, 87ST-112ST**

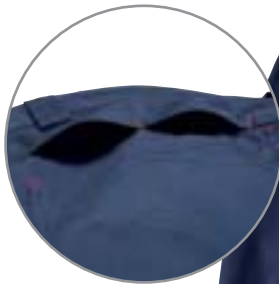
# Hard Yakka Shorts



## 05901 Xtreme Cotton Duck Weave Short

- 345gsm, 100% cotton duck weave, silicone washed double strength pre-shrunk canvas
- Bellowed cargo pockets with provisions for mobile phone, note pad, pencil pockets and tools
- Ruler pocket containing extra tool and pencil partition
- Reinforcements with Cordura® patches for added durability
- Swing-away pockets that can be tucked into main trouser pocket and Velcro loops for tool belts
- Heavy-duty nylon zip fly
- All stress points bar-tacked and heavyweight poly cotton pocketing

**COLOURS** Khaki (260), Navy (438), Charcoal (604)  
**SIZES** 72R-117R



**STYLE DISCONTINUED**



## 05554 Koolgear Cotton Twill Short with Ventilation

- 270gsm, 100% cotton twill fabric
- Soft wash finish
- Ventilated legs and back yoke with cotton mesh
- Yoke cut on bias for extra movement
- Multiple pockets for mobile phone, pencil and ruler
- Two back hip patch pockets

**COLOURS** Khaki (260), Navy (438)  
**SIZES** 77R-112R



# Hard Yakka Shorts



## 05025 Cotton Drill Long Leg Elastic Waist Short

- 310gsm, pre-shrunk 100% cotton fabric
- Longer inleg: 9cm longer than 05533
- Elasticised waistband with drawstring
- Two side pockets

**COLOURS** Navy (438), ~~Green (518)~~

**SIZES** 77R-122R



## 05501 Utility Cotton Drill Short with Side Tabs

- 310gsm, pre-shrunk 100% cotton fabric
- Adjustable side tabs with extended waistband
- Patch hip pocket, fob and two side pockets

**COLOURS** White (060), Khaki (260), Navy (438), Green (518), Black (602), **Grey (620)**

**SIZES** 62R-107R, 87ST-132ST



## 05508 Tradesman Cotton Drill Long Leg Short

- 310gsm, pre-shrunk 100% cotton fabric
- Longer inleg 20cm
- Mobile phone and ruler leg pocket
- Double utility pocket and fob pocket

**COLOURS** Khaki (260), **Navy (438)**

**SIZES** 77R-102R, 87ST-112ST



## 05511 Utility Cotton Drill Short with Belt Loops

- 310gsm, pre-shrunk 100% cotton fabric
- Waistband with seven belt loops and button closure
- Patch hip pocket, fob pocket and two side pockets
- All stress points bar-tacked

**COLOURS** Khaki (260), Navy (438), **Green (518)**

**SIZES** 72R-107R, 87ST-132ST



## 05533 Elastic Waist Cotton Drill Short

- 310gsm, pre-shrunk 100% cotton fabric
- Elasticised waistband with drawstring
- Patch hip pocket, two side pockets and fob pocket
- All stress points bar-tacked

**COLOURS** ~~Khaki (260)~~, **Navy (438)**, Green (518)

**SIZES** 72R-132R



## 05537 Utility Cotton Drill Long Leg Short

- 310gsm, pre-shrunk 100% cotton fabric
- Longer inleg: 9cm longer than style 05501
- Adjustable side tabs and extended waistband
- Two side pockets, fob pocket and patch hip pocket

**COLOURS** **Khaki (260)**, Navy (438), Green (518)

**SIZES** 67R-107R, 87ST-132ST



**05579 Double Pleated Front Poly Viscose Short with Teflon**

- 245gsm, 65% polyester 35% viscose fabric with Teflon finish
- Double pleated front
- Extendable waistband with seven belt loops and button closure

**COLOURS** Dark Navy (437), ~~Black (602)~~

**SIZES** 72R-107R, 87ST-132ST



**05589 Permanent Press Pleat Front Poly Viscose Short with Teflon and Supercrease**

- 245gsm, 80% polyester 20% viscose fabric with Teflon and Supercrease finishes
- Double pleated front
- Two side pockets and fob pockets

**COLOURS** Midnight (436), Bottle Green (506), Black (602)

**SIZES** 77R-107R, 87ST-132ST



**05594 Permanent Press Plain Front Expandable Waistband Poly Viscose Short with Teflon and Supercrease**

- 245gsm, 80% polyester 20% viscose fabric with Teflon and Supercrease finishes
- Extended waistband with seven belt loops and button closure
- Fob pocket and two side pockets

**COLOURS** Putty (040), Brown (210), Midnight (436), Navy (438), Royal (444), Green (518), Olive (532), Gunmetal (608)

**SIZES** 77R-107R, 87ST-132ST



**05601 Cotton Drill 5 Pocket Short**

- 310gsm, pre-shrunk 100% cotton fabric
- Two patch hip pockets and fob pocket
- Stud button closure

**COLOURS** Khaki (260), Navy (438), Green (518)

**SIZES** 77R-112R



**05681 Enzyme Washed Denim Short**

- 490gsm, 100% cotton denim fabric
- Pre-washed work jean cut
- Reinforced and riveted stress points
- Stud button closure

**COLOUR** Navy (438)

**SIZES** 77R-102R, 87ST-112ST



**09271 Double Pleated Front Wrinkle Resistant Short**

- 280gsm, 100% cotton fabric
- Double pleated front
- Two side pockets and fob pocket
- Two jetted hip pockets with button closures

**COLOURS** Stone (057), Navy (438)

**SIZES** 77R-107R, 92ST-112ST

# Hard Yakka Shorts



## 05900 Legends Cotton Duck Weave Short

- 345gsm, 100% cotton duck weave, silicone washed double strength pre-shrunk canvas
  - Cargo pockets that have provisions for mobile phone, note pad, pencil pockets and tools
  - Ruler pocket containing extra tool and pencil partition, plus concealed gadget pocket on waistband
  - Reinforcements with Cordura® patches
  - Heavy-duty nylon zip fly
  - All stress points bar-tacked and heavyweight poly cotton pocketing
- COLOURS** Khaki (260), Navy (438), Green (518), Black (602)  
**SIZES** 77R-112R



## 05906 Legends Extra Light Cotton Duck Weave Short

- 260gsm, 100% cotton duck weave, silicone washed double strength pre-shrunk canvas
  - Cargo pockets that have provisions for mobile phone, note pad, pencil pockets and tools
  - Ruler pocket containing extra tool and pencil partition, plus concealed gadget pocket on waistband
  - Reinforcements with Cordura® patches
  - Heavy-duty nylon zip fly
  - All stress points bar-tacked and heavyweight poly cotton pocketing
- COLOURS** Khaki (260), Navy (438)  
**SIZES** 77R-112R



## 05500 Generation Y Cotton Drill Short

- 310gsm, pre-shrunk 100% cotton fabric
  - Cargo and mobile phone bellow pockets with mitred flaps
  - Waistband with five wide belt loops
  - Mitred patch hip pockets with mitred flaps
  - Back darts
  - Stud button front closure
  - Metal fly zip
- COLOURS** Stone (057), Khaki (260), Navy (438), Green (518), Black (602), White (060)  
**SIZES** 67R-112R (Also 117ST-132ST in Navy only)



## 05590 Generation Y Permanent Press Poly Viscose Short with Teflon

- 245gsm, 80%polyester 20% viscose fabric with Teflon finish
  - Cargo and mobile phone bellow pockets with mitred flaps
  - Waistband with five wide belt loops
  - Back darts
  - Mitred patch hip pockets with mitred flaps
  - Plastic button front closure
  - Nylon zip fly
- COLOURS** ~~Putty (040)~~, Midnight (436), Black (602)  
**SIZES** 77R-112R (117ST-132ST available in Midnight and Black)



# Hard Yakka Shirts



## 07554 Koolgear Cotton Twill Ventilated Shirt Short Sleeve

- 145gsm, 100% cotton twill
- Upper back mesh cape and shoulder vents
- Underarm cotton mesh vents
- Two button down chest pockets
- Pen partition in left pocket
- Safety Orange: Complies with AS/NZS 1906.4:1997 High-Visibility Materials and AS/NZS 4602:1999 High-Visibility Safety Garments Class Day

**COLOURS** Khaki (260), ~~Safety Orange (331)~~, Navy (438)

**SIZES** SM-5X



## 07556 Koolgear Hi-Visibility Two Tone Cotton Twill Ventilated Shirt with 3M Tape Long Sleeve

- 145gsm, 100% cotton twill
- 3M 50mm 8910 reflective tape
- Upper back mesh cape and shoulder vents
- Underarm cotton mesh vents
- Two button down chest pockets
- Pen partition in left pocket
- Complies with AS/NZS 1906.4:1997 High-Visibility Materials and AS/NZS 4602:1999 High-Visibility Safety Garments Class Day/Night

**COLOURS** Orange/Navy (335), Yellow/Navy (770)

**SIZES** SM-5X



## 07555 Koolgear Hi-Visibility Cotton Twill Ventilated Shirt with 3M Tape Short Sleeve

- 145gsm, 100% cotton twill
- 3M 50mm 8910 reflective tape
- Upper back mesh cape and shoulder vents plus underarm mesh vents
- Two button down chest pockets with pen partition in left pocket
- Complies with AS/NZS 1906.4:1997 High-Visibility Materials
- Safety Orange: AS/NZS 4602:1999 High-Visibility Safety Garments Class Day/Night

- Navy: AS/NZS 4602:1999 High-Visibility Safety Garments Class Night

**COLOURS** Safety Orange (331), Navy (438)

**SIZES** SM-5X



## 07557 Koolgear Hi-Visibility Two Tone Cotton Twill Ventilated Shirt with 3M Tape Short Sleeve

- 145gsm, 100% cotton twill
- 3M 50mm 8910 reflective tape
- Upper back mesh cape and shoulder vents
- Underarm cotton mesh vents
- Two button down chest pockets
- Pen partition in left pocket
- Complies with AS/NZS 1906.4:1997 High-Visibility Materials and AS/NZS 4602:1999 High-Visibility Safety Garments Class Day/Night

**COLOURS** Orange/Navy (335), Yellow/Navy (770)

**SIZES** SM-5X

# Hard Yakka Shirts



## 07558 Koolgear Hi-Visibility Two Tone Cotton Twill Ventilated Shirt Long Sleeve

- 145gsm, 100% cotton twill
  - Upper back mesh cape and shoulder vents
  - Underarm cotton mesh vents
  - Two button down chest pockets
  - Pen partition in left pocket
  - Complies with AS/NZS 1906.4:1997 High-Visibility Materials and AS/NZS 4602:1999 High-Visibility Safety Garments Class Day
- COLOURS** Orange/Navy (335), Yellow/Green (703), **Yellow/Navy (770)**  
**SIZES** SM-5X



## 07559 Koolgear Hi-Visibility Two Tone Cotton Twill Ventilated Shirt Short Sleeve

- 145gsm, 100% cotton twill
  - Upper back mesh cape and shoulder vents
  - Underarm cotton mesh vents
  - Two button down chest pockets
  - Pen partition in left pocket
  - Complies with AS/NZS 1906.4:1997 High-Visibility Materials and AS/NZS 4602:1999 High-Visibility Safety Garments Class Day
- COLOURS** Orange/Navy (335), Yellow/Green (703), Yellow/Navy (770)  
**SIZES** SM-5X



## 07560 Koolgear Cotton Twill Ventilated Shirt Long Sleeve

- 145gsm, 100% cotton twill
  - Upper back mesh cape and shoulder vents
  - Underarm cotton mesh vents
  - Two button down chest pockets
  - Pen partition in left pocket
  - Safety Orange: Complies with AS/NZS 1906.4:1997 High-Visibility Materials and AS/NZS 4602:1999 High-Visibility Safety Garments Class Day
- COLOURS** Khaki (260), **Safety Orange (331)**, Navy (438)  
**SIZES** SM-5X



## 07565 Koolgear Hi-Visibility Cotton Twill Ventilated Shirt with 3M Tape Long Sleeve

- 145gsm, 100% cotton twill
  - 3M 50mm 8910 reflective tape
  - Upper back mesh cape and shoulder and underarm cotton mesh vents
  - Two button down chest pockets with pen partition in left pocket
  - Complies with AS/NZS 1906.4:1997 High-Visibility Materials
  - Safety Orange: AS/NZS 4602:1999 High-Visibility Safety Garments Class Day/Night
  - Navy: AS/NZS 4602:1999 High-Visibility Safety Garments Class Night
- COLOURS** **Safety Orange (331)**, Navy (438)  
**SIZES** SM-5X





**3M**



**07790 Koolgear Hi-Visibility Two Tone Cotton Twill  
Shirt with 3M Perforated Tape Long Sleeve**

- 145gsm, 100% cotton twill
  - 3M 8725 perforated tape
  - Upper back mesh cape and shoulder vents
  - Underarm cotton mesh vents
  - Two button down chest pockets
  - Pen partition in left pocket
  - Complies with AS/NZS 1906.4:1997 High-Visibility Materials and AS/NZS 4602:1999 High-Visibility Safety Garments Class Day/Night
- COLOURS** Orange/Navy (335), Yellow/Navy (770)  
**SIZES** SM-6X



# Hard Yakka Shirts



**3M**

## 07107 Hi-Visibility Cotton Drill Shirt with 3M Tape Long Sleeve

- 185gsm, pre-shrunk 100% cotton fabric
- 3M 9910 50mm reflective tape suitable for light industrial wash
- H tape chest configuration, with hoop around sleeve and chest
- Full open front closure
- Two button down chest pockets
- Pen partition in left pocket
- Complies with AS/NZS 1906.4:1997 High-Visibility Materials and AS/NZS 4602:1999 High-Visibility Safety Garments Class Day/Night

**COLOUR Safety Orange (331)**

**SIZES SM-4XOS**



**3M**

## 07108 Hi-Visibility Cotton Drill Shirt with 3M Tape Short Sleeve

- 185gsm, pre-shrunk 100% cotton fabric
- 3M 9910 50mm reflective tape suitable for light industrial wash
- H tape chest configuration, with hoop around sleeve and chest
- Full open front closure
- Two button down chest pockets
- Pen partition in left pocket
- Complies with AS/NZS 1906.4:1997 High-Visibility Materials and AS/NZS 4602:1999 High-Visibility Safety Garments Class Day/Night

**COLOUR Safety Orange (331)**

**SIZES SM-4XOS**



## 07115 Hi-Visibility Two Tone Cotton Drill Shirt Long Sleeve

- 185gsm, pre-shrunk 100% cotton fabric
- Full open front closure
- Two button down chest pockets
- Pen Partition in left pocket
- Complies with AS/NZS 1906.4:1997 High-Visibility Materials and AS/NZS 4602:1999 High-Visibility Safety Garments Class Day

**COLOURS Orange/Navy (335), Yellow/Green (703), Yellow/Navy (770)**

**SIZES SM-5XOS**



## 07116 Hi-Visibility Two Tone Cotton Drill Shirt Short Sleeve

- 185gsm, pre-shrunk 100% cotton fabric
- Full open front closure
- Two button down chest pockets
- Pen partition in left pocket
- Complies with AS/NZS 1906.4:1997 High-Visibility Materials and AS/NZS 4602:1999 High-Visibility Safety Garments Class Day

**COLOURS Orange/Navy (335), Yellow/Green (703), Yellow/Navy (770)**

**SIZES SM-5XOS**



**07198 Hi-Visibility Two Tone Cotton Drill Open Front Shirt with Gusset Long Sleeve**

- 185gsm, pre-shrunk 100% cotton fabric
- Full open front closure
- Two button down chest pockets
- Pen partition in left pocket
- Gusset sleeve vent and cuff closure
- Complies with AS/NZS 1906.4:1997 High-Visibility Materials and AS/NZS 4602:1999 High-Visibility Safety Garments Class Day

**COLOURS** Orange/Navy (335), Yellow/Navy (770)

**SIZES** SM-5XOS



**07199 Hi-Visibility Two Tone Cotton Drill Closed Front Shirt with Gusset Long Sleeve**

- 185gsm, pre-shrunk 100% cotton fabric
- Closed front
- Two button down chest pockets
- Pen partition in left pocket
- Gusset sleeve vent and cuff closure
- Complies with AS/NZS 1906.4:1997 High-Visibility Materials and AS/NZS 4602:1999 High-Visibility Safety Garments Class Day

**COLOURS** Orange/Navy (335), Yellow/Navy (770)

**SIZES** SM-5XOS



**07200 Hi-Visibility Two Tone Cotton Twill with Rayosan Shirt Long Sleeve**

- 155gsm, pre-shrunk 100% cotton fabric with Rayosan treatment
- Full open front closure
- Two button down chest pockets
- Pen partition in left pocket
- Complies with AS/NZS 1906.4:1997 High-Visibility Materials and AS/NZS 4602:1999 High-Visibility Safety Garments Class Day

**COLOURS** Orange/Navy (335), Yellow/Navy (770)

**SIZES** SM-5XOS



**07216 Hi-Visibility Two Tone Cotton Twill with Rayosan Shirt Short Sleeve**

- 155gsm, pre-shrunk 100% cotton fabric with Rayosan treatment
- Full open front closure
- Two button down chest pockets
- Pen partition in left pocket
- Complies with AS/NZS 1906.4:1997 High-Visibility Materials and AS/NZS 4602:1999 High-Visibility Safety Garments Class Day

**COLOURS** Yellow/Navy (770)

**SIZES** SM-5XOS

# Hard Yakka Shirts



**3M**

## 07227 Hi-Visibility Cotton Drill Shirt with 3M Tape Long Sleeve

- 185gsm, pre-shrunk 100% cotton fabric
  - 3M 50mm 8910 reflective tape
  - Full open front closure
  - Two button down chest pockets
  - Pen partition in left pocket
  - Complies with AS/NZS 1906.4:1997 High-Visibility Materials
  - Safety Orange: AS/NZS 4602:1999 High-Visibility Safety Garments Class Day/Night
  - Navy: AS/NZS 4602:1999 High-Visibility Safety Garments Class Night
- COLOURS** Safety Orange (331), Navy (438)

**SIZES** SSM-4XOS



**3M**

## 07228 Hi-Visibility Cotton Drill Shirt with 3M Tape Short Sleeve

- 185gsm, pre-shrunk 100% cotton fabric
  - 3M 50mm 8910 reflective tape
  - Full open front closure
  - Two button down chest pockets
  - Pen partition in left pocket
  - Complies with AS/NZS 1906.4:1997 High-Visibility Materials
  - Safety Orange: AS/NZS 4602:1999 High-Visibility Safety Garments Class Day/Night
  - Navy: AS/NZS 4602:1999 High-Visibility Safety Garments Class Night
- COLOURS** Safety Orange (331), Navy (438)

**SIZES** SM-4XOS



**3M**

## 07278 Hi-Visibility Two Tone Cotton Drill Shirt with 3M Tape Long Sleeve

- 185gsm, pre-shrunk 100% cotton fabric
  - 3M 50mm 8910 reflective tape
  - Full open front closure
  - Two button down chest pockets
  - Pen partition in left pocket
  - Complies with AS/NZS 1906.4:1997 High-Visibility Materials and AS/NZS 4602:1999 High-Visibility Safety Garments Class Day/Night
- COLOURS** Orange/Navy (335), Yellow/Navy (770)

**SIZES** SM-4XOS



**3M**

## 07298 Hi-Visibility Closed Front Cotton Drill Shirt with 3M Tape Long Sleeve

- 185gsm, pre-shrunk 100% cotton fabric
  - 3M 8910 50mm reflective tape
  - Closed front
  - Two button down chest pockets with pen partition in left pocket
  - Complies with AS/NZS 1906.4:1997 High-Visibility Materials
  - Safety Orange: AS/NZS 4602:1999 High-Visibility Safety Garments Class Day/Night
  - Navy: AS/NZS 4602:1999 High-Visibility Safety Garments Class Night
- COLOURS** Safety Orange (331), Navy (438)

**SIZES** SM-6XOS





**CORDURA®**



### 07901 Legends Cotton Duck Weave Shirt Long Sleeve

- 210gsm, 100% cotton fabric
- Silicone washed double strength pre-shrunk canvas
- Cordura® reinforcements
- One chest pocket with button down flap
- Additional chest pocket that includes mobile phone pocket and pencil partitions
- All seams double stitched and stress points bar-tacked
- Two in one sleeve option

**COLOURS** Khaki (260), Navy (438)

**SIZES** SM-4XOS

Legends



Legends

**CORDURA®**



### 07902 Legends Cotton Duck Weave Shirt Short Sleeve

- 210gsm, 100% cotton fabric
- Silicone washed double strength pre-shrunk canvas
- Cordura® reinforcements
- One chest pocket with button down flap
- Additional chest pocket that includes mobile phone pocket and pencil partitions
- All seams double stitched and stress points bar-tacked

**COLOURS** Khaki (260), Navy (438)

**SIZES** SM-4XOS

# Hard Yakka Shirts



## 04310 Generation Y Cotton Twill Shirt Long Sleeve

- 145gsm, 100% cotton twill
- Two in one option for sleeve length
- Mesh upper back yoke for ventilation
- Two chest pockets with feature detailing and embroidered eyelets
- Pen partition in left pocket
- Full open front closure

**COLOURS** Sandstone (020), Kelp (200)

**SIZES** SM-2XL



## 04311 Generation Y Cotton Twill Shirt Short Sleeve

- 145gsm, 100% cotton twill
- Mesh upper back yoke for ventilation
- Two chest pockets with feature detailing and embroidered eyelets
- Pen partition in left pocket
- Full open front closure

**COLOURS** Sandstone (020), Kelp (200)

**SIZES** SM-2XL



## 07501 Generation Y Cotton Drill Shirt Long Sleeve

- 185gsm, pre-shrunk 100% cotton fabric
- Two chest pockets with Velcro down flaps and secondary zip
- Pen partition in left pocket
- Back box pleat with loop
- Two in one sleeve option
- Square hem with side splits

**COLOURS** Stone (057), Khaki (260), Navy (438)

**SIZES** SM-4X



## 07502 Generation Y Cotton Drill Shirt Short Sleeve

- 185gsm, pre-shrunk 100% cotton fabric
- Two chest pockets with Velcro down flaps and secondary zip
- Pen partition in left pocket
- Back box pleat with loop
- Square hem with side splits

**COLOURS** Stone (057), Khaki (260), Navy (438)

**SIZES** SM-4X



#### 07500 Cotton Drill Shirt Long Sleeve

- 185gsm, pre-shrunk 100% cotton fabric
- Pleated back
- Two piece collar and stand
- Placket front
- Two button down chest pockets
- Pen partition in left pocket
- Full open front closure
- Safety Orange: Complies with AS/NZS 1906.4:1997 High-Visibility Materials and AS/NZS 4602:1999 High-Visibility Safety Garments Class Day

**COLOURS** White (060), **Khaki (260)**, Safety Orange (331), Blue Medit (406), Navy (438), Green (518), Grey (620)

**SIZES** SM-6XOS (SSM available in Khaki, Navy, Green, Grey)

**Also available:**

#### 07510 Cotton Drill Shirt Short Sleeve

**SIZES** SM-6XOS (SSM available in Khaki, Navy, Green)



Industrial



#### 07529 Cotton Chambray Shirt Short Sleeve

- 140gsm, pre-shrunk 100% cotton chambray
- Pleated back
- Two piece collar and stand
- Placket front
- Two button down chest pockets
- Pen partition in left pocket
- Full open front closure

**COLOUR** Chambray (413)

**SIZES** SM-5XOS

**Also available:**

#### 07528 Cotton Chambray Shirt Long Sleeve

**SIZES** SM-5XOS



Industrial





# Hard Yakka Shirts



## 07017 Check Flannel Shirt Long Sleeve

- 260gsm, pre-shrunk 100% cotton twill yarn dyed flannel fabric
- Full open front closure
- Two button down chest pockets
- Pen partition in left pocket

**COLOUR** Navy (438)

**SIZES** SM-3XOS



## 07530 Cotton Drill Closed Front Shirt Long Sleeve

- 185gsm, pre-shrunk 100% cotton fabric
- Pleated back
- Two piece collar and stand
- Two button down chest pockets with pen partition in left pocket
- Four button placket front and placket sleeves
- Safety Orange: Complies with AS/NZS 1906.4:1997 High-Visibility Materials and AS/NZS 4602:1999 High-Visibility Safety Garments Class Day

**COLOURS** Khaki (260), Safety Orange (331), Blue Medit (406), Navy (438), Green (518), ~~Grey (620)~~

**SIZES** SM-6XOS



## 07533 Cotton Drill Closed Front Gusset Sleeve Shirt Long Sleeve

- 185gsm, pre-shrunk 100% cotton fabric
- Pleated back
- Two piece collar and stand
- Full gusset sleeve, vent and cuff
- Two button down chest pockets
- Pen partition in left pocket
- Four button placket front

**COLOUR** Navy (438)

**SIZES** SM-5XOS



## 07540 Cotton Drill Shirt Closed Front Short Sleeve

- 185gsm, pre-shrunk 100% cotton fabric
- Pleated back
- Two piece collar and stand
- Two button down chest pockets
- Pen partition in left pocket
- Four button placket front

**COLOURS** Khaki (260), Navy (438), **Green (518)**, ~~Grey (620)~~

**SIZES** SM-6XOS



#### 07561 Cotton Drill Open Front Shirt with Gusset Long Sleeve

- 185gsm, pre-shrunk 100% cotton fabric
- Pleated back
- Two piece collar and stand
- Full gusset sleeve, vent and cuff
- Two button down chest pockets
- Pen partition in left pocket
- Full open front closure

**COLOURS** White (060), **Blue Medit (406)**, Navy (438)

**SIZES** SM-5XOS (6XOS available in White)



#### 07590 Permanent Press Poly Cotton Shirt Long Sleeve

- 120gsm, 65% polyester 35% cotton fabric
- Full open front placket closure
- Two button down chest pockets
- Pen partition in left pocket
- Box pleat
- Two button adjustable cuff and sleeve placket vent

**COLOURS** Putty (040), White (060), **Blue Medit (406)**, Blue Grey (410), Midnight (436), Navy (438), ~~Royal (444)~~, Green (518), Olive (532), Gunmetal (608)

**SIZES** SM-6XOS (SSM available in Putty, Blue Medit, Navy, Royal)



#### 07591 Permanent Press Poly Cotton Shirt Short Sleeve

- 120gsm, 65% polyester 35% cotton fabric
- Full open front placket closure
- Two button down chest pockets
- Pen partition in left pocket
- Box pleat

**COLOURS** Putty (040), White (060), ~~Red (338)~~, Blue Medit (406), Blue Grey (410), Midnight (436), Navy (438), Royal (444), Green (518), **Olive (532)**, Gunmetal (608)

**SIZES** SM-6XOS (SSM available in Putty, Blue Medit, Navy)



#### 07658 Cotton Indigo Chambray Shirt Long Sleeve

- 145gsm, 100% cotton chambray
- Two button down chest pockets
- Pen partition in left pocket
- Pleated back
- Placket sleeves
- Two piece collar and stand

**COLOUR** Indigo (425)

**SIZES** SM-5XOS

**Also available:**

**07659 Cotton Chambray Shirt Short Sleeve**

**SIZES** SM-5XOS



# Hard Yakka Shirts



## 07660 Rayosan Cotton Drill Shirt Long Sleeve

- 155gsm, 100% cotton fabric with Rayosan finish
- Two button down chest pockets with pen partition in left pocket
- Two piece collar and stand
- Placket sleeves
- Full open front closure
- Safety Orange and Yellow: Comply with AS/NZS 1906.4:1997 High-Visibility Materials and AS/NZS 4602:1999 High-Visibility Safety Garments Class Day

**COLOURS** Khaki (260), Yellow (299), **Safety Orange (331)**, Navy (438), Green (518), ~~Grey (620)~~

**SIZES** SM-6XOS



## 07690 Permanent Press Poly Cotton Shirt with Epaulettes Long Sleeve

- 120gsm, 65% polyester 35% cotton fabric
- Two piece collar
- Fused shoulder epaulettes
- Full open front placket closure
- Two button down chest pockets
- Pen partition in left pocket
- Box pleat

**COLOURS** Putty (040), White (060), ~~Gold (246)~~, **Blue Medit (406)**

**SIZES** SM-6XOS (SSM available in Putty, White, Blue Medit)



## 07691 Permanent Press Poly Cotton Shirt with Epaulettes Short Sleeve

- 120gsm, 65% polyester 35% cotton fabric
- Two piece collar
- Fused shoulder epaulettes.
- Full open front placket closure
- Two button down chest pockets
- Pen partition in left pocket
- Box pleat

**COLOURS** Putty (040), White (060), ~~Gold (246)~~, Blue Medit (406)

**SIZES** SM-6XOS (SSM available in Putty, White, Blue Medit)



## 07710 Rayosan Cotton Drill Shirt Short Sleeve

- 155gsm, 100% cotton fabric with Rayosan finish
- Two button down chest pockets
- Pen partition in left pocket
- Two piece collar and stand
- Full open front closure

**COLOURS** Khaki (260), **Navy (438)**

**SIZES** SM-5XOS (6XOS available in Navy)





#### 10040 Poly Cotton Chambray Shirt Long Sleeve

- 105gsm, 65% polyester 35% cotton fabric
- Multipurpose dual chest pockets with inverted pleat
- Two pen partitions on each pocket
- Full open front placket closure
- Centre back box pleat
- Two piece fused collar
- Two button adjustable cuff and sleeve placket vent
- Red trimming

**COLOUR Chambray (413)**

**SIZES SM-4XL**

**Also available:**

**10041 Poly Cotton Chambray Shirt Short Sleeve**



#### 10042 Cotton Denim Shirt Long Sleeve

- 195gsm, 100% cotton denim
- Multipurpose dual chest pockets with inverted pleat
- Pen partition
- Full open front placket closure
- Centre back box pleat
- Two piece fused collar
- Two button adjustable cuff and sleeve placket vent
- Red trimming

**COLOUR Denim (491)**

**SIZES SM-4XL**

**Also available:**

**~~10043 Cotton Denim Shirt Short Sleeve~~**



#### 10049 Bedford Stripe Cotton Shirt Short Sleeve

- 140gsm, 100% bedford stripe and 160gsm cotton chambray inside yoke
- Multipurpose dual chest pockets with inverted pleat
- Pen partition
- Full open front placket closure
- Centre back box pleat
- Two piece fused collar
- Red trimming

**COLOUR Navy (438)**

**SIZES SM-4XL**

**Also available:**

**10048 Bedford Stripe Cotton Shirt Long Sleeve**



#### 10050 Check Viscose Poly Shirt Long Sleeve

- 142gsm, 65% viscose 35% polyester
- Multipurpose dual chest pockets with inverted pleat
- Two pen partitions on each pocket
- Full open front placket closure
- Centre back box pleat
- Two piece fused collar
- Two button adjustable cuff and sleeve placket vent
- Red trimming

**COLOUR Blue (408)**

**SIZES SM-4XL**

**Also available:**

**~~10051 Check Viscose Poly Shirt Short Sleeve~~**



# Hard Yakka Shirts



## 22741 Poly Cotton End On End Shirt Short Sleeve

- 115gsm, 65% polyester 35% cotton fabric
- Two box pleated chest pockets with button down flaps
- Pen partition in left pocket
- Full open front placket closure
- Centre back box pleat
- Two piece fused collar
- Red trimming

**COLOUR** Blue (408)

**SIZES** SM-4XL

**Also available:**

**22740 Poly Cotton End On End Shirt Long Sleeve**



## 22750 Mini Houndstooth Poly Cotton Shirt Long Sleeve

- 102gsm, 65% polyester 35% cotton fabric
- Two button down chest pockets
- Pen partition in left pocket
- Full open front placket closure
- Centre back box pleat
- Two piece fused collar
- Two button adjustable cuff and sleeve placket vent
- Red trimming

**COLOURS** Navy (438), Light Blue (447), ~~Green (518)~~

**SIZES** SM-4XL

**Also available:**

**22751 Mini Houndstooth Poly Cotton Shirt Short Sleeve**

**COLOURS** Navy (438), Light Blue (447), Green (518)



## 22770 Chambray Cotton Shirt Long Sleeve

- 150gsm, pre-shrunk 100% cotton fabric
- Two piece fused button down collar
- Two button adjustable cuff
- Two button down chest pockets
- Pen partition in left pocket
- Centre back box pleat
- Full open front placket closure

**COLOURS** Chambray (413), Green (518)

**SIZES** XS-5XL



## 22771 Chambray Cotton Shirt Short Sleeve

- 150gsm, pre-shrunk 100% cotton fabric
- Two piece fused button down collar
- Two button down chest pockets
- Pen partition in left pocket
- Centre back box pleat
- Full open front placket closure

**COLOURS** Chambray (413), Green (518)

**SIZES** XS-5XL

# Hard Yakka Polos & T-Shirts



## 11202 Koolgear Hi-Visibility Two Tone Cotton Backed Micromesh Polo with 3M Segmented Tape Long Sleeve

- 185gsm, 100% cotton back pique knit and 100% polyester pique fabric
- Synthetic microfibre coated with moisture management system draws perspiration away, providing dryness and comfort
- Silky soft touch from ultra light filaments
- 3M 5510 50mm segmented tape, front and back panels
- 3M 8725 50mm perforated tape, under arm and side seams
- Chest pocket with pen partition and mesh ventilation under arm
- Complies with AS/NZS 1906.4:1997 High-Visibility Materials and AS/NZS 4602:1999 High-Visibility Safety Garments Class Day/Night

**COLOURS** Lemon/Dark Navy (263), Lemon/Bottle Green (264), **Orange/Dark Navy (849)**

**SIZES** 10-30

**Also available:**

**11203 Koolgear Hi-Visibility Two Tone Cotton Backed Micromesh Polo with 3M Segmented Tape Short Sleeve**



# Hard Yakka Polos & T-Shirts



Koolgear

## 11329 Koolgear Hi-Visibility Two Tone Ventilated Polyester Micromesh Polo Long Sleeve

- 160gsm, 100% polyester (primary fabric), 135gsm 100% polyester dobby (secondary fabric) and 100% polyester (mesh)
- Synthetic microfibre coated with moisture management system draws perspiration away, providing dryness and comfort
- Silky soft touch from ultra light filaments
- Reflective piping and stretch reflective tape trim
- Chest zip pocket
- Ventilated back yoke
- Complies with AS/NZS 1906.4:1997 High-Visibility Materials and AS/NZS 4602:1999 High-Visibility Safety Garments Class Day

**COLOURS** Orange/Navy (335), Yellow/Navy (770)

**SIZES** 10-30



Koolgear

## 11333 Koolgear Hi-Visibility Two Tone Ventilated Polyester Micromesh Polo Short Sleeve

- 160gsm, 100% polyester (primary fabric), 135gsm 100% polyester Dobby (secondary fabric) and 100% Polyester (mesh)
- Synthetic microfibre coated with moisture management system draws perspiration away, providing dryness and comfort
- Silky soft touch from ultra light filaments
- Reflective piping and stretch reflective tape trim
- Chest zip pocket
- Ventilated back yoke
- Complies with AS/NZS 1906.4:1997 High-Visibility Materials and AS/NZS 4602:1999 High-Visibility Safety Garments Class Day

**COLOURS** Orange/Navy (335), Yellow/Navy (770)

**SIZES** 10-30



woolscience™



Koolgear

## 11844 Koolgear Hi-Visibility Woolscience™ Two Tone Ventilated Polo Long Sleeve

- 170gsm, 50% merino wool and 50% polyester microfibre
- Woolscience™ technology offers the fastest moisture vapour absorption rate on any fabric
- Chest pocket with pen partition
- Mesh ventilation under arm
- Complies with AS/NZS 1906.4:1997 High-Visibility Materials and AS/NZS 4602:1999 High-Visibility Safety Garments Class Day

**COLOURS** Lemon/Dark Navy (263), Orange/Dark Navy (849)

**SIZES** 10-30



woolscience™



Koolgear

## 11845 Koolgear Hi-Visibility Woolscience™ Two Tone Ventilated Polo Short Sleeve

- 170gsm, 50% merino wool and 50% polyester microfibre
- Woolscience™ technology offers the fastest moisture vapour absorption rate on any fabric
- Chest pocket with pen partition
- Mesh ventilation under arm
- Complies with AS/NZS 1906.4:1997 High-Visibility Materials and AS/NZS 4602:1999 High-Visibility Safety Garments Class Day

**COLOURS** Lemon/Dark Navy (263), Orange/Dark Navy (849)

**SIZES** 10-30



**11847 Koolgear Hi-Visibility Two Tone Ventilated Cotton Backed Micromesh Polo Long Sleeve**

- 185gsm, 100% cotton back with 100% polyester face pique fabric
- Synthetic microfibre coated with moisture management system draws perspiration away, providing dryness and comfort
- Silky soft touch from ultra light filaments
- Chest pocket with pen partition
- Mesh ventilation under arm
- Complies with AS/NZS 1906.4:1997 High-Visibility Materials and AS/NZS 4602:1999 High-Visibility Safety Garments Class Day

**COLOURS** Lemon/Dark Navy (263), Lemon/Bottle Green (264), Orange/Dark Navy (849)

**SIZES** 10-30



**11848 Koolgear Hi-Visibility Two Tone Ventilated Cotton Backed Micromesh Polo Short Sleeve**

- 185gsm, 100% cotton back with 100% polyester face pique fabric
- Synthetic microfibre coated with moisture management system draws perspiration away, providing dryness and comfort
- Silky soft touch from ultra light filaments
- Chest pocket with pen partition
- Mesh ventilation under arm
- Complies with AS/NZS 1906.4:1997 High-Visibility Materials and AS/NZS 4602:1999 High-Visibility Safety Garments Class Day

**COLOURS** Lemon/Dark Navy (263), Lemon/Bottle Green (264), Orange/Dark Navy (849)

**SIZES** 10-30



**11853 Koolgear Hi-Visibility Two Tone Ventilated Cotton Backed Micromesh Polo with 3M Tape Long Sleeve**

- 185gsm, 100% cotton back pique knit and 100% polyester pique fabric
- Synthetic microfibre coated with moisture management system draws perspiration away, providing dryness and comfort
- Silky soft touch from ultra light filaments
- 3M 8910 50mm reflective tape (sewn on)
- Chest pocket with pen partition
- Mesh ventilation under arm
- Complies with AS/NZS 1906.4:1997 High-Visibility Materials and AS/NZS 4602:1999 High-Visibility Safety Garments Class Day/Night

**COLOURS** Lemon/Dark Navy (263), Orange/Dark Navy (849)

**SIZES** 10-30



**11854 Koolgear Hi-Visibility Two Tone Ventilated Cotton Backed Micromesh Polo with 3M Tape Short Sleeve**

- 185gsm, 100% cotton back pique knit and 100% polyester pique fabric
- Synthetic microfibre coated with moisture management system draws perspiration away, providing dryness and comfort
- Silky soft touch from ultra light filaments
- 3M 8910 50mm reflective tape (sewn on)
- Chest pocket with pen partition
- Mesh ventilation under arm
- Complies with AS/NZS 1906.4:1997 High-Visibility Materials and AS/NZS 4602:1999 High-Visibility Safety Garments Class Day/Night

**COLOURS** Lemon/Dark Navy (263), Lemon/Bottle Green (264), Orange/Dark Navy (849)

**SIZES** 10-30

# Hard Yakka Polos & T-Shirts

## 11856 Koolgear Hi-Visibility Two Tone Ventilated Cotton Jersey Polo Long Sleeve

- 205gsm, 100% cotton fabric
- Jersey provides softness and comfort
- Chest pocket with pen partition
- Mesh ventilation under arm
- Complies with AS/NZS 1906.4:1997 High-Visibility Materials and AS/NZS 4602:1999 High-Visibility Safety Garments Class Day

**COLOURS** Lemon/Dark Navy (263),  
Lemon/Bottle Green (264), Orange/Dark Navy (849)  
**SIZES** 10-30



Koolgear



## 11857 Koolgear Hi-Visibility Two Tone Ventilated Cotton Jersey Polo Short Sleeve

- 205gsm, 100% cotton fabric
- Jersey provides softness and comfort
- Chest pocket with pen partition
- Mesh ventilation under arm
- Complies with AS/NZS 1906.4:1997 High-Visibility Materials and AS/NZS 4602:1999 High-Visibility Safety Garments Class Day

**COLOURS** Lemon/Dark Navy (263),  
~~Lemon/Bottle Green (264),~~  
Orange/Dark Navy (849)  
**SIZES** 10-30



Koolgear





### 11336 Hi-Visibility Two Tone Cotton Back Micromesh Polo Long Sleeve

- 185gsm, 100% cotton back with 100% polyester face pique knit fabric
- Synthetic microfibre coated with moisture management system draws perspiration away, providing dryness and comfort
- Silky soft touch from ultra light filaments
- Reflective piping trim
- Front hip pouch pocket
- Complies with AS/NZS 1906.4:1997 High-Visibility Materials and AS/NZS 4602:1999 High-Visibility Safety Garments Class Day

**COLOURS** Orange/Navy (335), Yellow/Navy (770)

**SIZES** 10-30



### 11115 Hi-Visibility Micromesh Short Sleeve

- 160gsm, 100% polyester pique fabric
- Synthetic microfibre with moisture management system draws perspiration away, providing dryness and comfort
- Chest pocket with pen partition
- Three button placket front
- Complies with AS/NZS 1906.4:1997 High-Visibility Materials and AS/NZS 4602:1999 High-Visibility Safety Garments Class Day

**COLOURS** Lemon (262), Orange (332)

**SIZES** 12-30



### 11337 Hi-Visibility Two Tone Cotton Back Micromesh Polo Short Sleeve

- 165gsm, 100% cotton back with 100% polyester face pique knit fabric
- Synthetic microfibre coated with moisture management system draws perspiration away, providing dryness and comfort
- Silky soft touch from ultra light filaments
- Reflective piping
- Front hip pouch pocket
- Complies with AS/NZS 1906.4:1997 High-Visibility Materials and AS/NZS 4602:1999 High-Visibility Safety Garments Class Day

**COLOURS** Orange/Navy (335), Yellow/Navy (770)

**SIZES** 10-30

# Hard Yakka Polos & T-Shirts



## 11345 Hi-Visibility Micromesh Polyester Polo Long Sleeve

- 160gsm, 100% polyester pique fabric
- Synthetic microfibre coated with moisture management system draws perspiration away, providing dryness and comfort
- Three button placket front
- Left chest pocket
- Complies with AS/NZS 1906.4:1997 High-Visibility Materials and AS/NZS 4602:1999 High-Visibility Safety Garments Class Day

**COLOURS** Lemon (262), **Orange** (332)

**SIZES** 10-30



## 11547 Hi-Visibility Two Tone Poly Cotton Polo Long Sleeve

- 180gsm, 65% polyester and 35% cotton pique fabric
- Double stitched hems
- Taped shoulder seams
- Two piece placket
- Left chest pocket

**COLOURS** Fluoro Yellow/Navy (289)

**SIZES** SM-4XOS



## 11548 Hi-Visibility Pique Poly Cotton Polo Short Sleeve

- 180gsm, 65% polyester and 35% cotton pique fabric
- Double stitched hems
- Taped shoulder seams
- Two piece placket
- Left chest pocket

**COLOURS** Fluoro Yellow/Navy (289)

**SIZES** SM-5XOS



## 11629 Hi-Visibility Two Tone Cotton Backed Micromesh Polo Long Sleeve

- 185gsm, 100% polyester pique face and 100% cotton back pique knit
- Synthetic microfibre coated with moisture management system draws perspiration away, providing dryness and comfort
- Silky soft touch from ultra light filaments
- Three button placket front
- Left chest pocket

- Complies with AS/NZS 1906.4:1997 High-Visibility Materials and AS/NZS 4602:1999 High-Visibility Safety Garments Class Day

**COLOURS** Lemon/Dark Navy (263), Lemon/Bottle Green (264), **Orange/Dark Navy** (849)

**SIZES** 10-30



Hi-Visibility

#### 11630 Hi-Visibility Two Tone Cotton Backed Micromesh Polo Short Sleeve

- 185gsm, 100% polyester pique face and 100% cotton back pique knit
- Synthetic microfibre coated with moisture management system draws perspiration away, providing dryness and comfort
- Silky soft touch from ultra light filaments
- Three button placket front
- Left chest pocket
- Complies with AS/NZS 1906.4:1997 High-Visibility Materials and AS/NZS 4602:1999 High-Visibility Safety Garments Class Day

**COLOURS** Lemon/Dark Navy (263), Lemon/Bottle Green (264), **Orange/Dark Navy (849)**  
**SIZES** 10-30



#### 11698 Hi-Visibility Two Tone Cotton Backed Micromesh Polo with 3M Tape Long Sleeve

- 185gsm, 100% cotton back with 100% polyester face knit pique fabric
- Synthetic microfibre coated with moisture management system draws perspiration away, providing dryness and comfort
- Silky soft touch from ultra light filaments
- 3M 8910 50mm reflective tape (sewn on)
- Left chest pocket with pen partition
- Complies with AS/NZS 1906.4:1997 High-Visibility Materials and AS/NZS 4602:1999 High-Visibility Safety Garments Class Day/Night

**COLOURS** Orange/Dark Navy (849), Lemon/Dark Navy (263), **Lemon/Bottle Green (264)**

**SIZES** 10-30



Hi-Visibility



# Hard Yakka Polos & T-Shirts



Industrial

## 07700 Polyester Cotton Pique Knit Polo Short Sleeve

- 180gsm, 65% polyester 35% cotton pique fabric
- Taped shoulder seams
- Double stitched hems
- Reinforced pocket
- Two piece placket

**COLOURS** White (060), **Claret (312)**, Navy (438), Royal (444), Light Blue (447), Bottle Green (506), Black (602)

**SIZES** 12-30 (Sizes 8-10 available in Navy, Bottle Green, White)



Industrial

## 11001 Cotton T-Shirt Crew Neck Short Sleeve

- 190gsm, 100% cotton jersey fabric (combed)
- Inset sleeves
- Self fabric bound shoulder seams and neck seam
- Double stitched hems
- Two needle top stitch on shoulders and armholes

**COLOURS** White (060), Navy (438)

**SIZES** SM-5XL



Industrial

STYLE DISCONTINUED

## 11003 Striped Poly Cotton Polo

- 175gsm, 65% polyester 35% cotton jersey fabric
- Taped shoulder seams
- Double stitched hems
- Reinforced pocket
- Two piece placket

**COLOUR** Navy/White (757)

**SIZES** 10-30



Industrial

## 11225 Poly Cotton Birdseye Polo

- 175gsm, 65% polyester 35% cotton pique fabric
- Taped shoulder seams
- Double stitched hems
- Reinforced pocket
- Two piece placket

**COLOUR** Navy (438)

**SIZES** 10-28



#### **11250 Poly Cotton Interlock Singlet**

- 160gsm, 65% polyester 35% cotton fabric
- Ring spun jersey fabric
- Ribbed neckline and armhole opening
- Double stitched hems

**COLOUR Navy (438)**

**SIZES 14-26**



#### **11294 Poly Cotton Polo No Pocket Short Sleeve**

- 180gsm, 65% polyester 35% cotton pique fabric
- Two piece placket
- Taped shoulder seams
- Double stitched hems

**COLOUR Navy (438)**

**SIZES 10-30**



#### **11166 Poly Cotton Polo Long Sleeve**

- 180gsm, 65% polyester 35% cotton pique fabric
- Reinforced pocket
- Two piece placket
- Double stitched hems
- Taped shoulder seams

**COLOUR Navy (438)**

**SIZES 10-30**



#### **11178 Poly Cotton T-Shirt Crew Neck Short Sleeve**

- 160gsm, 65% polyester 35% cotton fabric
- Ring spun jersey fabric
- Ribbed neckline and sleeve opening
- Raglan sleeves for comfort
- Double stitched hems

**COLOURS White (060), Navy (438)**

**SIZES 12-30**

# Hard Yakka Polos & T-Shirts



## 11400 Poly Cotton Comfort Polo Short Sleeve

- 185gsm, 50% cotton and 50% polyester needle out fabric
- Left chest pocket
- Back neck facing
- Twin needle top stitching
- Fully fashioned one piece collar
- Side splits on hem
- Set-in sleeves

**COLOURS** ~~Stone (057)~~, Navy (438)

**SIZES** SM-4X



## 11701 Hard Yakka Branded Cotton T-Shirt Short Sleeve

- 190gsm, 100% cotton
- Jersey fabric
- Hard Yakka printed logo on left chest and right arm
- Self fabric bound shoulder and neck seams
- Double stitched hems

**COLOUR** Navy (438)

**SIZES** SM-XXL



## 11915 Poly Cotton Polo with Contrast Panels and Piping Short Sleeve

- 180gsm, 65% polyester and 35% cotton pique fabric
- Polo with contrast panels and piping to highlight design lines
- Collar stays to prevent turning up of collar edge
- Contrast herringbone trim for centre back neck
- Contrast colour on under-placket (not shown)

**COLOUR** Navy (438)

**SIZES** XS-3XL



## 11916 Poly Cotton Polo with Contrast Piping Short Sleeve

- 180gsm, 65% polyester and 35% cotton
- Polo with piping to highlight design lines.
- Collar stays to prevent turning up of collar edge
- Contrast herringbone trim for centre back neck
- Contrast colour on under-placket

**COLOURS** Navy (438), Black (602)

**SIZES** XS-3XL



# Hard Yakka Jumpers including Fleece & Knitwear



Hi-Visibility



## 11315 Hi-Visibility Two Tone Polar Fleece with Stretch Tape

- 300gsm, 100% polyester polar fleece
- Stretch fabric
- Stretchable reflective tape and reflective piping trim
- Loops for provisions to be inserted and interchangeable with an outer shell jacket
- Two concealed front zip pockets with rubber puller
- Pull toggles at inner hemline
- Complies with AS/NZS 1906.4:1997 High-Visibility Materials and AS/NZS 4602:1999 High-Visibility Safety Garments Class Day/Night

**COLOURS** Orange/Navy (335),  
Yellow/Navy (770)

**SIZES** SM-5X

# Hard Yakka Jumpers including Fleece & Knitwear



## 11320 Hi-Visibility Two Tone Jersey Fleece Hoodie

- 370gsm, 100% polyester jersey fleece (primary fabric), 370gsm, 50% polyester 50% cotton jersey (secondary fabric) and 100% polyester (mesh)
- Detachable hood with drawstring and toggles
- Two front welt pockets
- Ribbed cuffs and hem plus reflective piping
- Pen and mobile phone partition on left arm
- Loops for provisions to be inserted and interchangeable with an outer shell jacket
- Complies with AS/NZS 1906.4:1997 High-Visibility Materials and AS/NZS 4602:1999 High-Visibility Safety Garments Class Day

**COLOURS** Orange/Navy (335), Yellow/Navy (770)

**SIZES** SM-5X

Hi-Visibility





#### 11334 Hi-Visibility Two Tone Cotton Back Jersey Fleece

- 290gsm, 65% polyester 35% cotton
  - Low-pill yarn, jersey knit and brushed back
  - Rib knit fabric on waist, collar and cuffs
  - Two needle top stitch
  - Complies with AS/NZS 1906.4:1997 High-Visibility Materials and AS/NZS 4602:1999 High-Visibility Safety Garments Class Day
- COLOURS** Fluoro Yellow/Bottle Green (298), Orange/Navy (335), Fluoro Yellow/Navy (431)

**SIZES** 10-30



#### 11567 Hi-Visibility Two Tone Half Zip Polar Fleece Jumper

- 300gsm, 100% polyester polar fleece
  - Low-pilling polar fleece
  - Roomy side front pockets
  - Semi-elastic waist
  - Stand up YKK zip up collar
  - Complies with AS/NZS 1906.4:1997 High-Visibility Materials and AS/NZS 4602:1999 High-Visibility Safety Garments Class Day
- COLOURS** Fluoro Yellow/Bottle Green (298), Orange/Navy (335), Fluoro Yellow/Navy (431)

**SIZES** 10-30



#### 11568 Hi-Visibility Two Tone Full Zip Polar Fleece Vest

- 300gsm, 100% polyester polar fleece
  - Low-pilling polar fleece
  - Roomy side front pockets
  - Semi-elastic waist
  - Stand up collar
  - YKK zip
  - Complies with AS/NZS 1906.4:1997 High-Visibility Materials and AS/NZS 4602:1999 High-Visibility Safety Garments Class Day
- COLOURS** Fluoro Yellow/Bottle Green (298), Orange/Navy (335), Fluoro Yellow/Navy (431)

**SIZES** 12-28



#### 11697 Hi-Visibility Two Tone Cotton Back Jersey Fleece Rugby Top

- 290gsm, 65% polyester and 35% cotton
  - Low-pill yarn, jersey knit, brushed cotton back
  - Rib knit fabric on waist, collar and sleeve cuffs
  - Two needle top stitch
  - Complies with AS/NZS 1906.4:1997 High-Visibility Materials and AS/NZS 4602:1999 High-Visibility Safety Garments Class Day
- COLOURS** ~~Fluoro Yellow/Bottle Green (298)~~, Orange/Navy (335), Fluoro Yellow/Navy (431)

**SIZES** 10-32



# Hard Yakka Jumpers including Fleece & Knitwear



## 06310 Generation Y Zip Through Reversible Polar Fleece

- 330gsm, 100% polyester spun polar fleece
- Reversible polar fleece, offering two wearer options
- Two zip front pockets on one side
- Two welt pockets on the reverse side

**COLOURS** Dark Navy/Kelp (953)

**SIZES** SM-3X



Generation Y



## 06311 Generation Y Reversible Polar Fleece & Taslon Vest

- 330gsm, 100% polyester
- Reversible polar fleece offering two wearer options, polar fleece or Taslon
- Two zip front pockets on one side
- Two welt pockets on the reverse side
- Side toggles

**COLOURS** Kelp/Dark Navy (952)

**SIZES** SM-3X



Generation Y



**11016 Poly Cotton Jersey Fleece V-Neck Jumper**

- 290gsm, 65% polyester 35% cotton jersey fleece fabric
- Low-pill yarn, jersey knit and brushed back
- Rib knit fabric on waist, collar and cuffs
- Two needle top stitch

**COLOUR Navy (438)**

**SIZES 10-32**



**11167 Poly Cotton Half Zip Fleece Jumper**

- 290gsm, 65% polyester 35% cotton jersey fleece fabric
- Low-pill yarn, jersey knit and brushed back
- Rib knit fabric on waist, collar and cuffs
- Stand up YKK zip collar

**COLOUR Navy (438)**

**SIZES 10-28**



**11233 Poly Cotton Jersey Fleece Crew Neck Jumper**

- 290gsm, 65% polyester 35% cotton jersey fleece fabric
- Low-pill yarn, jersey knit and brushed back
- Rib knit fabric on waist, collar and cuffs
- Two needle top stitch

**COLOUR Navy (438)**

**SIZES 10-30**



**11482 Poly Cotton Half Zip Polar Fleece Jumper**

- 300gsm, 65% polyester and 35% cotton polar fleece
- Low-pilling polar fleece
- Roomy side front pockets
- Semi-elastic waist
- Stand up YKK zip up collar

**COLOUR Dark Navy (437)**

**SIZES 10-28**

# Hard Yakka Jumpers including Fleece & Knitwear



## 16041 Wool Acrylic V-Neck Jumper with Patches and Epaulettes

- 50% wool 50% low-pill acrylic
- 100% cotton twill epaulettes, shoulder and elbow patches
- Pen or pencil partition on left sleeve
- Safety stitched seams
- Generous fit
- Set-in sleeves

**COLOUR** Navy (438)

**SIZES** 14-28



## 16050 Wool Acrylic V-Neck Jumper

- 50% wool 50% low-pill acrylic
- Ribbed waistband and cuffs
- Raglan sleeves
- Safety stitched seams
- Generous fit

**COLOURS** Navy (438), Bottle Green (506), Black (602)

**SIZES** 10-28

**Also available:**

## 16051 Wool Acrylic V-Neck Vest

**COLOURS** Navy (438), Bottle Green (506), Black (602)

**SIZES** 10-28



## 16054 Superwash Wool V-Neck Vest

- 100% wool
- Machine washable
- Ribbed waistband and armhole
- Safety stitched seams
- Generous fit

**COLOURS** Navy (438)

**SIZES** 14-28

**Also available:**

## 16053 Superwash Wool V-Neck Jumper with Raglan Sleeves

**COLOURS** Navy (438), Bottle Green (506)

**SIZES** 14-28 (Navy in 30-32)



## 16057 Wool Nylon Crew Neck Fisherman's Jumper

- 85% wool 15% nylon
- 100% cotton shoulder and elbow patches
- Pencil partition on left sleeve
- Elbow reinforcement patch on left and right sleeves
- Reinforced shoulders
- Set-in sleeves

**COLOURS** ~~Navy (438)~~, Black (602)

**SIZES** SM-4XL



# Hard Yakka Jackets



## 04602 Hi-Visibility Waterproof Spray Jacket

- 190gsm, 100% polyester fabric, waterproof and seam sealed
- Concealed hood
- Back ventilation and reflective piping
- Full plastic YKK zip through closure
- Two welt pockets
- Concealed drawstring with plastic toggles
- Complies with AS/NZS 1906.4:1997 High-Visibility Materials and AS/NZS 4602:1999 High-Visibility Safety Garments Class Day

**COLOURS** Fluoro Orange (296), **Fluoro Yellow** (297)

**SIZES** SM-2XL



**3M**

## 06098 Hi-Visibility Waterproof Two Tone Pilot Jacket with 3M Tape

- 190gsm, 100% polyester oxford weave, 125gsm, 100% polyester quilting, waterproof and seam sealed
- 3M 50mm 8910 reflective tape
- Nylon press studs
- Concealed hood and storm flap in front of plastic zip opening
- Two dual front pockets with flaps and zips and two internal pockets, including pen partition
- Complies with AS/NZS 1906.4:1997 High-Visibility Materials and AS/NZS 4602:1999 High-Visibility Safety Garments Class Day/Night

**COLOURS** Orange/Navy (335), Yellow/Green (703), Yellow/Navy (770)

**SIZES** SM-8XOS



## 06195 Hi-Visibility Waterproof Two Tone Quilted Flying Jacket

- 190gsm, 100% polyester oxford weave, 140gsm, polyester padding, fully quilted, waterproof and seam sealed
- Concealed hood with drawstring
- Two welt pockets and left sleeve pocket for note pad and pen partition with zip closure
- Ribbed waistband, cuffs and collar
- Metal zip
- Complies with AS/NZS 1906.4:1997 High-Visibility Materials and AS/NZS 4602:1999 High-Visibility Safety Garments Class Day

**COLOURS** Orange/Navy (335), Yellow/Green (703), **Yellow/Navy** (770)

**SIZES** SM-6XOS



# Hard Yakka Jackets

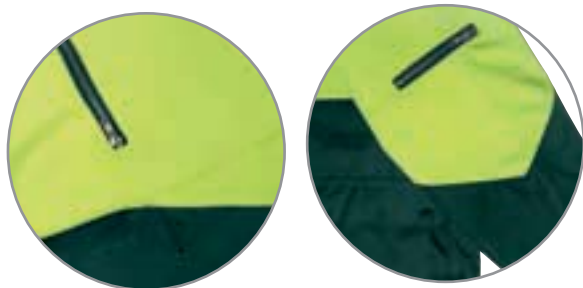


## 06159 Hi-Visibility Waterproof Two Tone Jutland Jacket

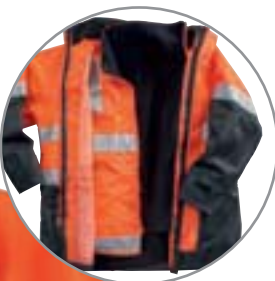
- 190gsm, nylon fabric in oxford weave and 125gsm, polyester quilted lining, waterproof and seam sealed
- Concealed hood
- Underarm eyelets for breathability
- Storm flap in front of plastic zip opening with plastic press studs
- Two way bellow pockets and left sleeve zip pockets
- Complies with AS/NZS 1906.4:1997 High-Visibility Materials and AS/NZS 4602:1999 High-Visibility Safety Garments Class Day

**COLOURS** Orange/Navy (335), Yellow/Green (703), Yellow/Navy (770)

**SIZES** SM-6XOS



Hi-Visibility



STYLE DISCONTINUED

Hi-Visibility



**3M**

## 06260 Hi-Visibility Two Tone Four Way Breathable Jacket with 3M Tape

- Jacket: 190gsm, 100% nylon upper body shell oxford weave construction with mesh lining
- Vest: 190gsm, 100% nylon shell in an oxford weave construction with fully reversible low-pill polar fleece lining
- 3M 50mm 8910 reflective tape
- Waterproofed, fully seam sealed, neoprene storm cuffs and concealed peaked hood
- Nylon zip, plus underarm eyelet holes for ventilation
- Two patch pockets with Velcro closure
- Complies with AS/NZS 1906.4:1997 High-Visibility Materials and AS/NZS 4602:1999 High-Visibility Safety Garments Class Day/Night

**COLOURS** Orange/Navy (335), Yellow/Green (703), Yellow/Navy (770)

**SIZES** SM-6XOS





**3M**

**06290 Hi-Visibility Two Tone Bluey Jacket 21oz with 3M Tape**

- 450gsm, 90% wool, 10% polyester outer and 100% cotton lining
- 3M 50mm 8910 reflective tape
- Two welt pockets
- Plastic zip
- One internal pocket on inside left chest
- Complies with AS/NZS 1906.4:1997 High-Visibility Materials and AS/NZS 4602:1999 High-Visibility Safety Garments Class Day/Night

**COLOURS** Orange/Navy (335), **Yellow/Navy (770)**

**SIZES** 87R-132R



**3M**

**06292 Hi-Visibility Two Tone Alaskan Jacket with 3M Tape**

- 190gsm, 100% polyester upper body shell in an oxford weave construction and 125gsm, polyester quilting
- 3M 50mm 8910 reflective tape
- Waterproofed, fully seam sealed, neoprene storm cuffs and concealed peaked hood
- Storm flap in front of nylon zip opening
- Two front pockets with flaps and zips
- One internal pocket and polar fleece collar
- Complies with AS/NZS 1906.4:1997 High-Visibility Materials and AS/NZS 4602:1999 High-Visibility Safety Garments Class Day/Night

**COLOURS** Yellow/Navy (770)

**SIZES** XS-6XL





# Hard Yakka Jackets



**3M**

## 06293 Hi-Visibility Anti-Static Jacket with 3M Tape

- 190gsm, 100% polyester upper body shell in an oxford weave construction and 100% cotton lining
- 3M 50mm 8935 fire retardant reflective tape
- Waterproofed, fully seam sealed, neoprene storm cuffs and concealed peaked hood
- Two patch pockets with Velcro closure
- One internal pocket on inside left chest
- Plastic zip
- Complies with AS/NZS 1906.4:1997 High-Visibility Materials and AS/NZS 4602:1999 High-Visibility Safety Garments Class Day/Night
- Anti-static components comply with EN 1149-3:2002

**COLOURS** Yellow/Navy (770)

**SIZES** XS-5XL



**3M**

## 06301 Hi-Visibility Two Tone Cotton Drill Work Jacket with 3M Tape

- 310gsm, 100% pre-shrunk cotton fabric and cotton brushed lining
- 3M 50mm 9910 reflective tape
- Large two way Velcro flap front pockets and side mobile phone zip pockets
- Back vents allowing movement
- Velcro closure on sleeve cuff
- Nylon zip
- Complies with AS/NZS 1906.4:1997 High-Visibility Materials and AS/NZS 4602:1999 High-Visibility Safety Garments Class Day/Night

**COLOURS** Orange/Navy (335), ~~Yellow/Green (703),~~  
Yellow/Navy (770)

**SIZES** SM-4XL





#### 06901 Hi-Visibility Two Tone Soft Shell Jacket with Stretch Tape

- 300gsm, 100% bonded polyester, jersey face polar fleece back
- Shower and wind proof
- Stretchable reflective tape with reflective piping trim
- Two concealed front zip pockets with rubber pullers
- Adjustable Velcro cuffs
- One chest pocket on right
- Concealed waistband draw cord with toggles
- Complies with AS/NZS 1906.4:1997 High-Visibility Materials and AS/NZS 4602:1999 High-Visibility Safety Garments Class Day/Night

**COLOURS** Orange/Navy (335), **Yellow/Navy (770)**

**SIZES** SM-5XL



**3M**

#### 06331 Hi-Visibility Four Way Cotton Drill Jacket with 3M Tape

- 310gsm, 100% pre-shrunk cotton fabric and cotton brushed lining
- Four in one jacket with detachable vest
- 3M 50mm 9910 reflective tape
- Large two way Velcro flap front pockets and side mobile phone zip pockets
- Back vents allowing movement and Velcro closure on sleeve cuff
- Nylon two way zip
- Complies with AS/NZS 1906.4:1997 High-Visibility Materials and AS/NZS 4602:1999 High-Visibility Safety Garments Class Day/Night

**COLOURS** Orange/Navy (335)

**SIZES** SM-6XL



**3M**

#### 17162 Hi-Visibility Waterproof Over Jacket with 3M Tape

- 190gsm, 100% polyester fabric
- 3M 50mm 8910 reflective tape
- Waterproofed oxford weave, fully seam sealed, neoprene storm cuffs and concealed peaked hood
- Storm flap in front of nylon zip opening
- Two dual front pockets with flaps and Velcro
- Napoleon pocket in top left front and concealed hood with drawstring
- Complies with AS/NZS 1906.4:1997 High-Visibility Materials and AS/NZS 4602:1999 High-Visibility Safety Garments Class Day/Night

**COLOURS** Fluoro Orange (296), Fluoro Yellow (297)

**SIZES** SM-6XL (See page 42 for matching trouser, style 17062)

# Hard Yakka Jackets



## 06039 Bluey Jacket 34oz 3/4 Length Unlined

- 700gsm, 90% wool 10% polyester
- Two side welt pockets
- Full plastic zip through closure
- Windbreaker collar
- Raglan sleeves

**COLOUR** Charcoal (604)

**SIZES** 92R-132R



## 06040 Tradesman Cotton Dustcoat

- 185gsm, 100% pre-shrunk cotton fabric
- Easy-fit raglan sleeve
- Concealed front button closure
- Two large side pockets
- Left chest pocket with pencil partition

**COLOURS** White (060), Grey (620)

**SIZES** 82R-122R



## 06041 Bluey Jacket 21oz Unlined

- 450gsm, 90% wool 10% polyester
- Press-stud welt pockets
- Raglan sleeves
- Ribbed waistband, cuffs and collar
- Unlined
- Full plastic zip through closure

**COLOURS** Navy (438), Black (602)

**SIZES** 92R-132R



## 06045 Bluey Jacket 21oz Cotton Lined

- 450gsm, 90% wool 10% polyester
- 100% cotton lining
- Press-stud welt pockets
- Raglan sleeves
- Ribbed waistband, cuffs and collar
- Full plastic zip through closure

**COLOUR** Navy (438)

**SIZES** 92R-132R





#### 06050 Poly Cotton Dustcoat

- 210gsm, 65% polyester 35% cotton fabric
- Raglan sleeve
- Metal press-stud closure
- Two large front patch pockets
- Left chest pocket with pen partition

**COLOURS** White (060), Navy (438), **Blue Medit (406)**, Grey (620)

**SIZES** 82R-122R



#### 06047 Bluey Jacket 21oz Polar Fleece Lined

- 450gsm, 90% wool 10% polyester
- 100% polar fleece lining
- Press-stud welt pockets
- Raglan sleeves
- Ribbed waistband, cuffs and collar
- Full plastic zip through closure

**COLOUR** Black (602)

**SIZES** 87R-132R



#### 06084 Londoner Poly Cotton Jacket

- 174gsm, 65% polyester 35% cotton canvas fabric
- 100% polyester lined
- Ribbed waistband, cuffs and collar
- Concealed hood
- Two welt side pockets
- Heavy-duty nylon zip

**COLOUR** Navy (438)

**SIZES** SM-7XL



#### 06093 Wool Viscose Team Jacket with Quilted Lining

- 430gsm, 90% wool 10% viscose melton
- Fully quilted with 125gsm, polyester quilting
- Two welt pockets
- Internal pocket
- Ribbed waistband, cuffs and collar
- Metal press-stud closure

**COLOURS** Navy (438), **Navy/Charcoal (440)**

**SIZES** M-7XL

# Hard Yakka Jackets



## 06099 Flying Jacket

- 106gsm, 100% nylon showerproof outer shell
- 125gsm, 100% polyester quilted lining
- Ribbed waistband, cuffs and collar
- Storm placket
- Concealed hood
- Two welt pockets and one internal pocket
- Sleeve pen pocket
- Heavy-duty YKK metal zip

**COLOURS** ~~Brown (210)~~, Navy (438), Light Olive (525), Black (602), ~~Grey (620)~~

**SIZES** SM-8XL



## 06100 Stanley Anti-Static Poly Cotton Quilted Jacket

- 175gsm, 65% polyester 35% cotton fabric outer and inner shell
- Quilted lining
- Fabric treated with an anti-static finish
- Flap pockets and storm cuffs
- Concealed hood and elastic waist back only
- Two front dual pockets and one internal pocket
- Left sleeve pocket for mobile phone and pen partition
- Plastic zip and press-studs
- Anti-static components comply with British standards BS 2050-1978, BS 6524-1990 and BS 5958-1991

**COLOUR** Navy (438)

**SIZES** XXS-7XL



### 06173 Arctic Jacket

- 190gsm, 100% polyester outer shell
- 280gsm, 100% polyester polar fleece lining
- Waterproof, plain weave construction and fully seam sealed
- Waistband draw cord with toggles
- Concealed hood
- Two nylon zip front pockets with flaps plus two front chest pockets
- Two internal pockets for mobile phone and note pad plus pen partition
- Nylon two way zip, plus plastic press-stud closure

**COLOUR Blue/Navy (806)**

**SIZES SM-8XL**

Industrial



STYLE DISCONTINUED



### 06302 Cotton Drill Work Jacket

- 310gsm, 100% pre-shrunk cotton fabric and cotton brushed lining
- Large two way Velcro flap front pockets and side mobile phone zip pockets
- Back pleats allowing movement
- Velcro closure on sleeve cuff
- Nylon zip

**COLOUR Navy (438)**

**SIZES SM-5XL**

Industrial



# Hard Yakka Safety Vests



STYLE DISCONTINUED



**3M**

## 21089 Hi-Visibility Anti-Static Vest with 3M Tape

- 100% polyester outer shell and 100% cotton fabric lining
- 3M 50mm 8935 fire retardant reflective tape
- Outer shell anti-static and waterproof and inner shell cotton lined
- Plastic zip
- Two dual front pockets with flaps and Velcro and two internal pockets with Velcro closure
- Anti-static components comply with EN 1149-3:2002
- Complies with AS/NZS 1906.4:1997 High-Visibility Materials and AS/NZS 4602:1999 High-Visibility Safety Garments Class Day/Night

**COLOUR Yellow (299)**

**SIZES XS-5XL**

Hi-Visibility



**3M**

**21088 Hi-Visibility Polyester Polar Fleece Vest with 3M Tape**

- 100% polyester
- 3M 50mm 8910 reflective tape
- Fully lined in polar fleece
- Two dual front pockets with flaps and Velcro
- Two internal pockets with Velcro closure
- Complies with AS/NZS 1906.4:1997 High-Visibility Materials and AS/NZS 4602:1999 High-Visibility Safety Garments Class Day/Night

**COLOURS** Yellow (299), Safety Orange (331), Yellow/Navy (770)

**SIZES** XS-5XL



**21027 Hi-Visibility Polyester Vest**

- 100% polyester
- Velcro closure
- Bound edges
- Complies with AS/NZS 1906.4:1997 High-Visibility Materials and AS/NZS 4602:1999 High-Visibility Safety Garments Class Day

**COLOURS** Fluoro Orange (296), Fluoro Yellow (297)

**SIZES** S-4X



**3M**

**21028 Hi-Visibility Polyester Vest with 3M Tape**

- 100% polyester
- 3M 50mm 8910 reflective tape
- Adjustable Velcro closure
- Bound edges
- Complies with AS/NZS 1906.4:1997 High-Visibility Materials and AS/NZS 4602:1999 High-Visibility Safety Garments Class Day/Night

**COLOURS** Fluoro Orange (296), Fluoro Yellow (297)

**SIZES** S-4X

# Hard Yakka for Women – Trousers



## 02910 Women's Legends Cotton Duck Weave Trousers

- 345gsm, 100% cotton duck weave, silicone washed double strength pre-shrunk canvas
- Cargo pockets that have provisions for mobile phone, note pad, pencil pockets and tools
- Ruler pocket containing extra tool and pencil partition, plus concealed gadget pocket on waistband
- Reinforcements with Cordura® patches
- Cordura® knee pad provisions
- Heavy-duty nylon zip fly and extended waistband
- All stress points bar-tacked and heavyweight poly cotton pocketing

**COLOURS** Khaki (260), Navy (438)

**SIZES** 8-24



## 08850 Women's Generation Y Cotton Drill Cargo Trousers

- 310gsm, pre-shrunk 100% cotton fabric
- Cargo and mobile phone bellow pockets with mitred flaps
- Waistband with five wide belt loops
- Back darts
- Mitred patch hip pockets with mitred flaps and fob pocket
- Plastic button front closure
- Heavy-duty nylon zip fly and extended waistband

**COLOURS** Khaki (260), Navy (438), Green (518)

**SIZES** 8-22



## 03042 Women's Stretch Denim Jeans 14 ½ oz

- 425gsm, 98% cotton 2% elastomer denim fabric
- Lightly washed
- Classic stretch women's fit
- Straight leg with five pocket styling
- All stress points bar-tacked and riveted for extra strength
- Heavy-duty metal zip and buttons

**COLOUR** Navy (438)

**SIZES** 8-22





**03043 Women's Rigid Denim Jean 14 ½ oz**

- 490gsm, 100% cotton enzyme washed rigid denim
- Classic rigid fit
- Low rise
- Straight leg with five pocket styling
- All stress points bar-tacked and riveted for extra strength
- Heavy-duty metal zip and button

**COLOUR Navy (438)**

**SIZES 8-22**



**08810 Women's Cotton Drill Plain Front Trouser**

- 310gsm, 100% pre-shrunk cotton fabric
- Low rise comfort fit
- Plain front
- Plastic button front closure
- Patch hip pocket, fob pocket, two side pockets and key loop keeper
- Heavy-duty nylon zip fly with extended waistband
- All stress points bar-tacked

**COLOURS** Khaki (260), Safety Orange (331), **Navy (438)**, Green (518)

**SIZES 8-22**



**08887 Women's Poly Viscose Permanent Press Trouser with Adjustable Waistband**

- 245gsm, 80% polyester 20% viscose fabric with Teflon and Supercare finishes
- Plain front permanent press with invisible expandable and extended waistband
- Two jetted back hip pockets with button closure
- Fob pocket
- Two side pockets
- Nylon fly zip and button closure

**COLOURS** ~~Putty (040)~~, Midnight (436), ~~Olive (532)~~, **Black (602)**

**SIZES 8-22**

# Hard Yakka for Women – Shorts



## 05910 Women's Legends Short

- 345gsm, 100% cotton duck weave, silicone washed double strength pre-shrunk canvas
- Cargo pockets that have provisions for mobile phone, note pad, pencil pockets and tools
- Ruler pocket containing extra tool and pencil partition, plus concealed gadget pocket on waistband
- Reinforcements with Cordura® nylon patches
- Heavy-duty nylon zip fly and extended waistband
- All stress points bar-tacked and heavyweight poly cotton pocketing

**COLOURS** Khaki (260), Navy (438)

**SIZES** 8-24



## 08851 Women's Generation Y Cotton Drill Cargo Short

- 310gsm, pre-shrunk 100% cotton fabric
- Cargo and mobile phone bellow pockets with mitred flaps
- Extended waistband with five wide belt loops
- Back darts
- Mitred patch hip pockets with mitred flaps and fob pocket
- Plastic button front closure
- Heavy-duty nylon zip fly

**COLOURS** Khaki (260), Navy (438), Green (518)

**SIZES** 8-22





**08888 Women's Poly Viscose Permanent Press Short with Adjustable Waistband**

- 245gsm, 80% polyester 20% viscose fabric with Teflon and Supercrease finishes
- Plain front permanent press with invisible expandable and extended waistband
- Two jetted back hip pockets with button closure
- Fob pocket
- Two side pockets
- Nylon fly zip and button closure

**COLOURS** ~~Putty (040)~~, Midnight (436)

**SIZES** 8-22



**08889 Women's Cotton Drill Plain Front Short**

- 310gsm, 100% pre-shrunk cotton fabric
- Low rise comfort fit
- Plain front
- Plastic button front closure
- Patch hip pocket, fob pocket, two side pockets and key loop keeper
- Heavy-duty nylon zip fly with extension waistband
- All stress points bar-tacked

**COLOURS** Khaki (260), Navy (438), Green (518)

**SIZES** 8-22





# Hard Yakka for Women – Tops



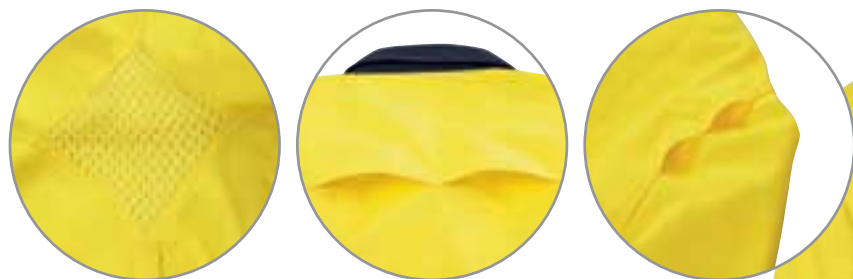
**3M**

## 08856 Women's Koolgear Hi-Visibility Two Tone Cotton Twill Shirt with 3M Tape Long Sleeve

- 145gsm, 100% cotton twill
- 3M 50mm 8910 reflective tape
- Upper back mesh cape and shoulder vents
- Underarm cotton mesh vents
- Two button down chest pockets
- Pen partition in left pocket
- Complies with AS/NZS 1906.4:1997 High-Visibility Materials and AS/NZS 4602:1999 High-Visibility Safety Garments Class Day/Night

**COLOURS** Orange/Navy (335), Yellow/Navy (770)

**SIZES** 8-22



## 08858 Women's Koolgear Hi-Visibility Two Tone Cotton Twill Shirt Long Sleeve

- 145gsm, 100% cotton twill
- Upper back mesh cape and shoulder vents
- Underarm cotton mesh vents
- Two button down chest pockets
- Pen partition in left pocket
- Complies with AS/NZS 1906.4:1997 High-Visibility Materials and AS/NZS 4602:1999 High-Visibility Safety Garments Class Day

**COLOURS** Orange/Navy (335), Yellow/Navy (770)

**SIZES** 8-22

**Also available:**

~~08883 Women's Koolgear Hi-Visibility Two Tone Cotton Twill Shirt Short Sleeve~~

**COLOURS** Orange/Navy (335), Yellow/Navy (770)





**08847 Women's Koolgear Two Tone Cotton Backed Micromesh Polo Long Sleeve**

- 185gsm, 100% cotton back pique knit 100% polyester pique fabric
- Synthetic microfibre coated with moisture management system draws sweat away, providing dryness and comfort
- Silky soft touch from ultra light filaments
- Fitted polo with chest pocket
- Eyelet holes for underarm ventilation
- Complies with AS/NZS 1906.4:1997 High-Visibility Materials and AS/NZS 4602:1999 High-Visibility Safety Garments Class Day

**COLOURS** Lemon/Dark Navy (263), Lemon/Bottle Green (264), Orange/Dark Navy (849)

**SIZES** XS-4XL

**Also available:**

**08848 Women's Koolgear Two Tone Cotton Backed Micromesh Polo Short Sleeve**

**COLOURS** Lemon/Dark Navy (263), Lemon/Bottle Green (264), Orange/Dark Navy (849)



**08629 Women's Hi-Visibility Cotton Back Polo Long Sleeve**

- 185gsm, 100% polyester pique face 100% cotton back pique knit
- Synthetic microfibre coated with moisture management system draws sweat away, providing dryness and comfort
- Silky soft touch from ultra light filaments
- Three button placket front
- Left chest pocket
- Complies with AS/NZS 1906.4:1997 High-Visibility Materials and AS/NZS 4602:1999 High-Visibility Safety Garments Class Day

**COLOURS** Lemon/Dark Navy (263), Lemon/Bottle Green (264), Orange/Dark Navy (849)

**SIZES** XS-4XL

**Also available:**

**08630 Women's Hi-Visibility Cotton Back Polo Short Sleeve**

**COLOURS** Lemon/Dark Navy (263), Lemon/Bottle Green (264), Orange/Dark Navy (849)



STYLE DISCONTINUED



# Hard Yakka for Women – Tops

## 08870 Women's Chambray Shirt Long Sleeve

- 150gsm, pre-shrunk 100% cotton fabric
- Two chest pockets with the security of button down flaps
- Pen partition in left pocket
- Full open front placket closure
- Centre back box pleat
- Set-in sleeves, two button adjustable cuff and sleeve placket vent
- All seams safety stitched

**COLOUR** Chambray (413)

**SIZES** 8-22



## 08871 Women's Chambray Shirt Short Sleeve

- 150gsm, pre-shrunk 100% cotton fabric
- Two chest pockets with the security of button down flaps
- Pen partition in left pocket
- Full open front placket closure
- Centre back box pleat
- Set-in sleeves, two button adjustable cuff and sleeve placket vent
- All seams safety stitched

**COLOUR** Chambray (413)

**SIZES** 8-22



## 08880 Women's Cotton Drill Shirt Long Sleeve

- 185gsm, pre-shrunk 100% cotton fabric
- Pleated back
- Two piece collar and stand
- Set-in sleeves placket sleeves
- Two chest button down pockets
- Pen partition in left pocket
- Full open front closure

**COLOURS** Khaki (260), Blue Medit (406), **Navy (438)**, Green (518)

**SIZES** 8-22





#### 08881 Women's Cotton Drill Shirt Short Sleeve

- 185gsm, pre-shrunk 100% cotton fabric
- Pleated back
- Two piece collar and stand
- Set-in sleeves placket sleeves
- Two button down chest pockets
- Pen partition in left pocket
- Full open front closure

**COLOURS** Khaki (260), Blue Medit (406), Navy (438), Green (518)

**SIZES** 8-22



#### 08890 Women's Poly Cotton Permanent Press Shirt Long Sleeve

- 120gsm, 65% polyester 35% cotton
- Two chest pockets with the security of button down flaps
- Pen partition in left pocket
- Set-in sleeves

**COLOURS** ~~Putty (040)~~, Blue Medit (406), ~~Olive (532)~~

**SIZES** 8-22



#### 08891 Women's Poly Cotton Permanent Press Shirt Short Sleeve

- 120gsm, 65% polyester 35% cotton
- Two chest pockets with the security of button down flaps
- Pen partition in left pocket
- Set-in sleeves

**COLOURS** ~~Putty (040)~~, Blue Medit (406)

**SIZES** 8-22

# Hard Yakka Safety Footwear

## 60030 Drover Lace-up Boot

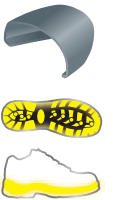
- Nubuck leather lace-up boot
- Thermolite® lining
- Padded collar
- Gel foot bed
- Dual density Polyurethane midsole and Thermo Plastic Urethane outsole
- Heat resistant to 130°C
- Steel safety toe cap AS/NZS 2210.3

**COLOURS** ~~Dark Brown (211)~~, Taupe (286), Black (602)

**SIZES** 6-13, 6.5-10.5



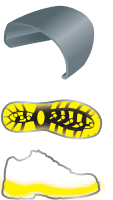
**Thermolite®**



**Thermolite®**



**Thermolite®**



## 60031 Ticka Lace-up Boot

- Nubuck leather lace-up boot
- Thermolite® lining
- Padded collar
- Gel foot bed
- Dual density Polyurethane midsole and Thermo Plastic Urethane outsole
- Heat resistant to 130°C
- Steel safety toe cap AS/NZS 2210.3

**COLOURS** Black (602), ~~Brown (210)~~

**SIZES** 6-13, 6.5-10.5

## 60032 Brumby Lace-up Boot

- Nubuck leather mid-cut lace-up boot
- Tectuff toe guard
- Thermolite® lining and padded collar
- Gel foot bed
- Dual density Polyurethane midsole and Thermo Plastic Urethane outsole
- Heat resistant to 130°C
- Anti-static
- Steel safety toe cap AS/NZS 2210.3

**COLOURS** ~~Brown (210)~~, Grey (620)

**SIZES** 6-13, 7.5-10.5

#### 60034 Bomber Lace-up Boot

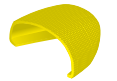
- Nubuck leather, mesh and reflective trim mid-cut lace-up boot
- Tectuff toe guard
- Thermolite® lining
- Padded collar and gel foot bed
- Dual density Polyurethane midsole and Thermo Plastic Urethane outsole
- Heat resistant to 130°C
- Anti-static
- Composite safety toe cap AS/NZS 2210.3

**COLOUR** Black (602)

**SIZES** 6-13, 7.5-10.5



**Thermolite®**



#### 60042 Apollo 6 inch Lace-up Boot

- 6 inch hiker lace-up boot
- Padded collar and comfort sock
- Gel foot bed
- Dual density Polyurethane midsole and Thermo Plastic Urethane outsole
- Heat resistant to 130°C
- Composite safety toe cap AS/NZS 2210.3
- Tectuff toe guard for increased durability

**COLOURS** Brown (210), Tan (284)

**SIZES** 6-13, 7.5-10.5

#### 60008 Slam Suede Lace-up Shoe

- Suede leather lace-up shoe
- Tectuff toe guard
- Poron innersole
- Dual density Polyurethane midsole and Thermo Plastic Urethane outsole
- Heat resistant to 130°C
- Steel safety toe cap AS/NZS 2210.3

**COLOUR** Light Taupe (287)

**SIZES** 6-13, 6.5-10.5



# Hard Yakka Safety Footwear



## 60033 Tallie Lace-up Shoe

- Nubuck leather low-cut lace-up shoe
- Anti-static
- Gel foot bed
- Padded collar
- Dual density Polyurethane midsole and Thermo Plastic Urethane outsole
- Heat resistant to 130°C
- Composite safety toe cap AS/NZS 2210.3

**COLOUR** Black (602)

**SIZES** 6-13, 7.5-10.5



## 60038 Typhoon Lace-up Safety Runner

- PU Ultrahide upper with breathable mesh inserts
- Shock absorbing gel foot bed for added cushioning and comfort
- Double stitched upper
- Heat resistant to 300°C
- Padded collar
- Rubber sports outsole
- Steel safety toe cap AS/NZS 2210.3

**COLOURS** ~~White (060)~~, Black (602)

**SIZES** 6-12, 7.5-10.5



## 60050 Cyclone Velcro Safety Runner

- PU Ultrahide upper with breathable mesh inserts
- Shock absorbing gel foot bed for added cushioning and comfort
- Double stitched upper
- Heat resistant to 300°C
- Padded collar
- Rubber sports outsole
- Steel safety toe cap AS/NZS 2210.3

**COLOURS** White (060), Black (602)

**SIZES** 6-12, 7.5-10.5



## 60052 Jack Safety Grip Lace-up Runner

- Leather upper
- Comfort innersole with a Poron heel
- Composite safety toe cap AS/NZS 2210.3
- Non-slip rubber outsole complies to EN 13287:2006 for slip resistance
- Fully lined with moisture management breathable lining

**COLOUR** Black (602)

**SIZES** 6-12, 7.5-10.5



Thermo<sup>lite</sup>®



Thermo<sup>lite</sup>®



#### 06802 Chippie Lace-up Boot

- Wheat nubuck leather lace-up safety boot
- Thermo<sup>lite</sup>® lining
- Padded collar
- Goodyear welt construction
- Nitrile rubber cleated outsole
- Heat resistant to 300°C
- Steel safety toe cap AS/NZS 2210.3

**COLOUR** Wheat (059)

**SIZES** 4-15, 4.5-10.5

#### 06803 Chippie Lace-up Boot

- Oily nubuck leather lace-up safety boot
- Thermo<sup>lite</sup>® lining
- Padded collar
- Goodyear welt construction
- Polyurethane cleated outsole
- Steel safety toe cap AS/NZS 2210.3

**COLOURS** Brown Timber (239), Black (602)

**SIZES** 6-13, 6.5-10.5



Thermo<sup>lite</sup>®



Thermo<sup>lite</sup>®



#### 60003 Stoker 6 inch Lace-up Boot

- Waxy leather 6 inch lace-up safety boot
- Thermo<sup>lite</sup>® lining
- Padded collar
- Poron innersole
- Dual density Polyurethane midsole and Thermo Plastic Urethane outsole
- Heat resistant to 130°C
- Steel safety toe cap AS/NZS 2210.3

**COLOURS** Black (602), ~~Brown (210)~~

**SIZES** 6-13, 6.5-10.5

#### 60004 Rocky 8 inch Lace-up Suede Boot

- Leather upper
- Thermo<sup>lite</sup>® lining
- Padded collar
- Poron innersole
- Dual density Polyurethane midsole and Thermo Plastic Urethane outsole
- Heat resistant to 130°C
- Steel safety toe cap AS/NZS 2210.3

**COLOURS** Beige Suede (005), Brown (210)

**SIZES** 6-13, 6.5-10.5

# Hard Yakka Safety Footwear



## 60000 Endeavour Elastic Side Boot

- Leather elastic side boot
- Poron innersole
- Dual density Polyurethane midsole and Thermo Plastic Urethane outsole
- Heat resistant to 130°C
- Steel safety toe cap AS/NZS 2210.3

**COLOUR Brown (210)**

**SIZES 6-13, 6.5-10.5**



## 06820 Patterson Lace-up Shoe

- Full grain leather low-cut lace-up shoe
- Poron innersole
- Dual density Polyurethane midsole and Thermo Plastic Urethane outsole
- Heat resistant to 130°C
- Steel safety toe cap AS/NZS 2210.3

**COLOURS** ~~Brown Timber (239)~~, **Black (602)**

**SIZES 6-13, 6.5-10.5**



## 60001 Stirling Elastic Side Suede Boot

- Suede leather elastic side boot
- Poron innersole
- Dual density Polyurethane midsole and Thermo Plastic Urethane outsole
- Heat resistant to 130°C
- Steel safety toe cap AS/NZS 2210.3

**COLOUR Beige Suede (005)**

**SIZES 6-13, 6.5-10.5**





#### 60002 Battler Elastic Side Boot

- Rambler leather elastic side boot
- Poron innersole
- Dual density Polyurethane midsole and Thermo Plastic Urethane outsole
- Heat resistant to 130°C
- Steel safety toe cap AS/NZS 2210.3

**COLOUR** Black (602)

**SIZES** 6-13, 6.5-10.5



#### 60035 Ace Elastic Side Boot

- Full grain leather elastic side boot
- Gel foot bed
- Dual density Polyurethane midsole and Thermo Plastic Urethane outsole
- Heat resistant to 130°C
- Anti-static
- Composite safety toe cap AS/NZS 2210.3

**COLOURS** Black (602), **Brown** (210)

**SIZES** 6-13, 7.5-10.5



#### 60040 Boomer Elastic Side Boot

- Leather elastic side boot
- Dual density Polyurethane outsole
- Heat resistant to 130°C
- Full length sock for added comfort
- Steel safety toe cap AS/NZS 2210.3

**COLOURS** Black (602), ~~Brown (210)~~

**SIZES** 6-13, 7.5-10.5



#### 60041 Billy Lace-up Boot

- Leather lace-up boot
- Dual density Polyurethane outsole
- Heat resistant to 130°C
- Full length sock for added comfort
- Steel safety toe cap AS/NZS 2210.3

**COLOUR** Black (602)

**SIZES** 6-13, 7.5-10.5

# Hard Yakka Non-Safety Footwear



Thermolite®

## 06826 Chippie Lace-up Leather Boot

- Nubuck leather lace-up boot
- Thermolite® lining
- Padded collar
- Goodyear welt construction
- Rubber cleated outsole (Wheat), PU cleated outsole (Brown)
- Heat resistant to 300°C

**COLOURS** Wheat (059), ~~Brown Timber (239)~~

**SIZES** Wheat: 4-13, 4.5-10.5; Brown Timber: 6-13, 6.5-10.5



Thermolite®



## 61042 Bouncer Security Lace-up Boot

- Water resistant leather upper with padded collar
- Thermolite® lining
- Gel foot bed
- Quick-release side zip
- Dual density EVA midsole
- Rubber outsole heat resistant to 300°C

**COLOUR** Black (602)

**SIZES** 6-13, 7.5-10.5



## 61006 Grippa Men's Casual Shoe

- Full grain leather lace-up shoe
- Fully lined
- Padded innersole and collar
- Shock absorbant innersole which moulds to foot
- Goodyear welt construction
- PVC outsole
- Heat resistant to 130°C

**COLOUR** Black (602)

**SIZES** 6-12, 6.5-10.5



## 61009 Storm Elastic Side Boot

- Waxy leather elastic side boot
- Poron innersole
- Dual density Polyurethane midsole and Thermo Plastic Urethane outsole
- Heat resistant to 130°C

**COLOUR** Brown (210)

**SIZES** 6-13, 6.5-10.5

# Hard Yakka Women's Footwear



## 60023 Cobb Women's Shoe

- Oily nubuck lace-up shoe with padded collar
- Poron innersole
- Dual density Polyurethane midsole and Thermo Plastic Urethane outsole
- Steel safety toe cap AS/NZS 2210.3

**COLOUR Black (602)**

**SIZES 2-8**



## 60039 Twister Lace-up Safety Runner

- PU Ultrahide upper with breathable mesh inserts
- Shock absorbing gel foot bed for added cushioning and comfort
- Double stitched upper and padded collar
- Rubber sports outsole heat resistant to 300°C
- Steel safety toe cap AS/NZS 2210.3

**COLOURS White (060), Black (602)**

**SIZES 5-10, 5.5-9.5**



## 60024 Sundowner Elastic Side Women's Boot

- Waxy leather elastic side boot
- Poron innersole
- Dual density Polyurethane midsole and Thermo Plastic Urethane outsole
- Steel safety toe cap AS/NZS 2210.3

**COLOUR Black (602)**

**SIZES 2-8**



**Thermolite®**

## 60025 Clipper Women's Boot

- Oily nubuck lace-up boot with padded collar
- Thermolite® lining and Poron innersole
- Dual density Polyurethane midsole and Thermo Plastic Urethane outsole
- Steel safety toe cap AS/NZS 2210.3

**COLOUR Black (602)**

**SIZES 2-8**



## 61007 Grippa Non-safety Women's Casual Shoe

- Full grain leather fully lined lace-up shoe
- Padded insoles and collar
- Shock absorbant innersole which moulds to foot
- PVC outsole with Goodyear welt construction

**COLOUR Black (602)**

**SIZES 3-8, 3.5-7.5**



## 60053 Jill Lace-up Safety Grip Shoe

- Comfort innersole with a Poron heel
- Fully lined with moisture management breathable lining
- Non-slip rubber outsole complies to EN 13287:2006 for slip resistance
- Composite safety toe cap AS/NZS 2210.3

**COLOUR Black (602)**

**SIZES 3-8**



# Hard Yakka Accessories



## 09402 Leather Belt

- Chocolate: colorado oil tan leather and antique brass buckle
- Black: hand-milled crazyhorse leather and satin nickel buckle
- Seven adjustable holes
- 35mm width
- Reinforced heavy-duty stitching

**COLOURS** Chocolate (230), Black (602)

**SIZES** 82R-112R



## 22920 Legends Knee Pads

- 20mm high-handed polyethylene and with froth finishing
- Bevelled edges for easy insertion into the knee pad pouches
- Fits Hard Yakka Legends and Xtreme styles
- Style Nos. 01900, 02900, 02901, 02905, 02906, 02910

**COLOURS** Black (602)

**SIZES** M (one size fits all)



## 20008 Wool Nylon Army Work Socks

- 75% wool and 25% nylon
- Natural fibre content helps with comfort and moisture absorption
- Special knit top
- Longer sock length
- Cushioned soles for greater comfort with 75% soft wool terrylyn knit

**COLOURS** Navy (438), Olive (532), Black (602), Grey (620)

**SIZES** L (6-10), XL (11-14)



## 20065 Acrylic Nylon Twin Pack Deodorised Socks

- 50% acrylic 50% nylon
- Deodorised for freshness
- Special knit top and cushioned soles for greater comfort
- Contrast heel and toe design

**COLOURS** Navy (438), Black (602)

**SIZES** L (6-10), XL (11-14)



## 20501 Wool Nylon Socks

- 80% wool 20% nylon
- Natural fibre content helps with comfort and moisture absorption
- Loop back knit allows breathability
- Contrast heel and toe design for reinforcement for maximum comfort and durability

**COLOURS** Khaki (260), Navy (438), Denim (491), Black (602)

**SIZES** L (6-10), XL (11-14)



[hardyakka.com.au](http://hardyakka.com.au)

**YAKKA PTY LTD HEAD OFFICE**

26 King William Street, Broadmeadows, VIC 3047  
ACN 004 251 852 ABN 98 004 251 852

**Telephone** [Admin] +61 3 9279 1599 [Customer Service] +61 3 9279 1555

**Facsimile** [Admin] +61 3 9309 9640 [Customer Service] +61 3 9309 0616

© Yakka June 2009 First Edition I YA6104

**Hard Yakka®**  
**Nothing's Tougher.**